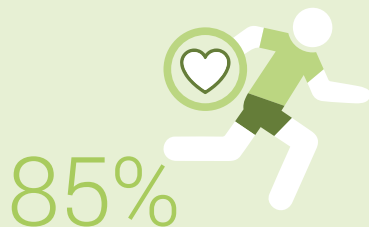


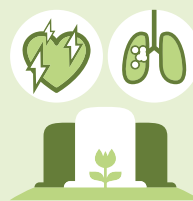
Figures from 2017 unless another year is specified



Share of the population in good health



Share of the population that is obese



64 964

Deaths in 2016, of which:

Cardiovascular diseases 20 712

Cancer 17 201

Dementia 5 764

Accidents 2 552

Suicide 1 016



259 421

Full-time equivalents, jobs in hospitals and nursing homes



4.3

Doctors per 1000 inhabitants

CHF 80.5 bn

(12.2% of the GDP)

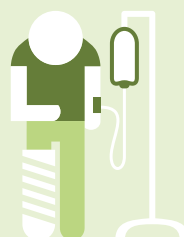
Health expenditure 2016, of which:

Outpatient curative treatment CHF 21.4 bn

Inpatient curative treatment CHF 15.8 bn

Long-term care CHF 15.6 bn

Medical goods CHF 13.1 bn



12%

Share of the hospitalised population

16%

Share of the population aged 80 and over in nursing homes (72% of residents aged ≥ 80 years are women)

