



## 278 345

Number of social assistance recipients

## 3.3%

Social assistance rate

## 47.8%

Share of foreign nationals among social assistance recipients



## 25.8%

Expenditure on the system of social security benefits, as % of the GDP, in 2016

## CHF 170 bn

Expenditure on social benefits, in 2016



- ① Sickiness/health care **31.2%**
- ② Disability **8.8%**
- ③ Old age **42.1%**
- ④ Survivors **4.9%**
- ⑤ Family/children **5.9%**
- ⑥ Unemployment **3.8%**
- ⑦ Housing **0.5%**
- ⑧ Social exclusion **3.0%**



## CHF 2.8 bn

Net expenditure on social assistance in the narrow sense

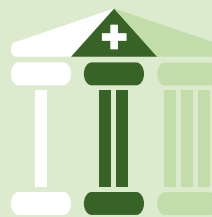


## CHF 43.3 bn

OASI, expenditure

## CHF 44.4 bn

OASI, revenue



## CHF 36.7 bn

2nd pillar, benefits (pensions + lump-sum)

## 1.2 m

Recipients of benefits