



Press release

Embargo: 10.4.2018, 9:15

20 Economic and social situation of the population

No. 2018-0190-E

Income and living conditions (SILC) 2016: Poverty in Switzerland

Poverty in Switzerland is mostly short-term

Neuchâtel, 10 April 2018 (FSO) – **In 2016, 7.5% of the Swiss resident population or around 615 000 people were affected by income poverty including 140 000 employed persons. While the majority of people affected by poverty regained an income above the poverty threshold after one year, around 1% of the population remained poor in the long term. In European comparison, Switzerland is among the countries with the lowest proportion of people at risk in the long term. These are some of the results from the Statistics on Income and Living Conditions (SILC) and the new publication from the Federal Statistical Office (FSO) on the topic “Dynamics of poverty in Switzerland”.**

FEDERAL STATISTICAL OFFICE
Media Office

You can find the complete text of the press release in German, French or Italian:

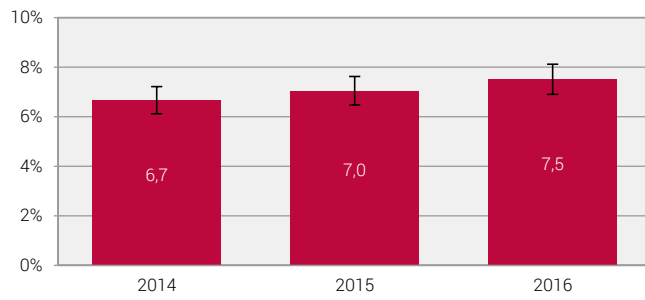
For German see: www.bfs.admin.ch/news/de/2018-0190

For French see: www.bfs.admin.ch/news/fr/2018-0190

For Italian see: www.bfs.admin.ch/news/it/2018-0190

Evolution of the poverty rate, 2014–2016

In % of the population



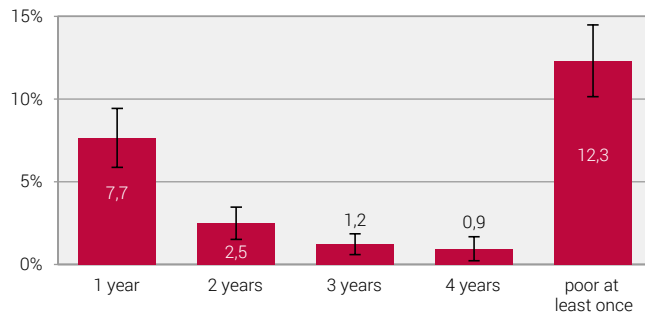
I Confidence interval (95%)

Source: FSO – Statistics on Income and Living Conditions (SILC),
excluding imputed rent

© FSO 2018

Persons affected by poverty over a four year period

By number of years, in % of the population



I Confidence interval (95%)

Source: FSO – Statistics on Income and Living Conditions (SILC),
longitudinal data 2013–2016, version from 24.1.2018, excluding imputed rent

© FSO 2018