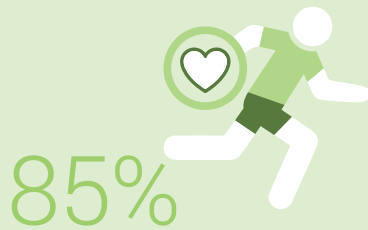


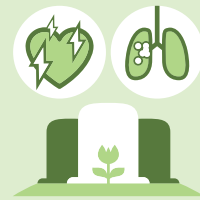
Figures from 2019 unless another year is specified



Share of the population in good health, 2017

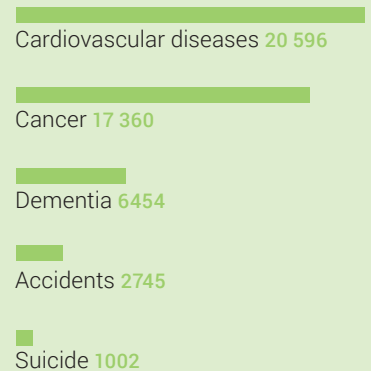


Share of the population that is obese, 2017



67 088

Deaths in 2018, of which:



269 504

Full-time equivalents, jobs in hospitals and nursing homes



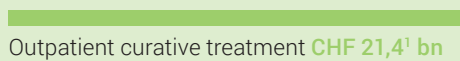
4.4

Doctors per 1000 inhabitants

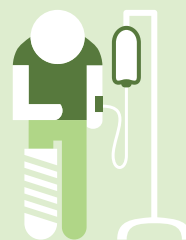
CHF 82.1¹ bn

(11.3% of the GDP)

Health expenditure, of which:



¹ provisional data



12%

Share of the population hospitalised throughout the year



15%

Share of the population aged 80 and over in nursing homes (73% of residents aged ≥ 80 years are women)