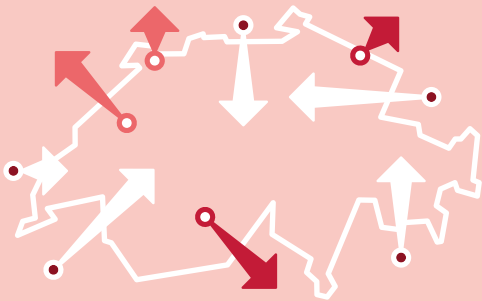


Figures from 2019 unless another year is specified



Gross domestic product (GDP)

CHF 726 921 m

At current prices, provisional

CHF 84 769 per inhabitant

+1.1%

Change over previous year,
at prices of preceding year, provisional

CHF 731 903 m

Gross national income (GNI)

at current prices, provisional

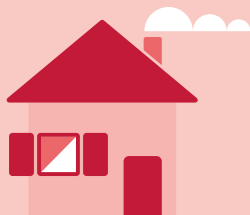
CHF 362 828 m

Consumption expenditure

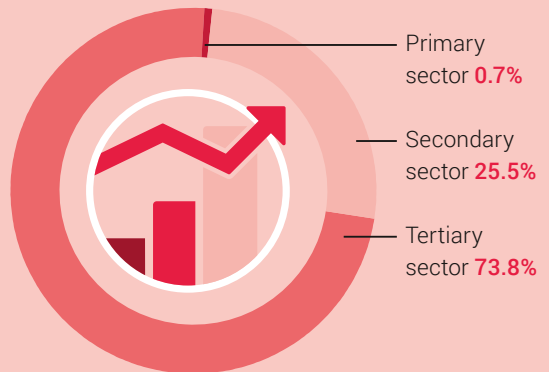
at current prices,

provisional

CHF 42 311 per inhabitant



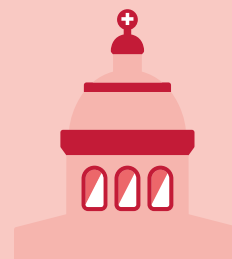
Structure of the Swiss economy
as a % of the GDP, by economic sectors



20.8%

Savings rate of private households

as a % of the gross disposable income incl. the 2nd pillar



+1.4%

Surplus (+)/deficit (-)
of general government
in relation to the GDP