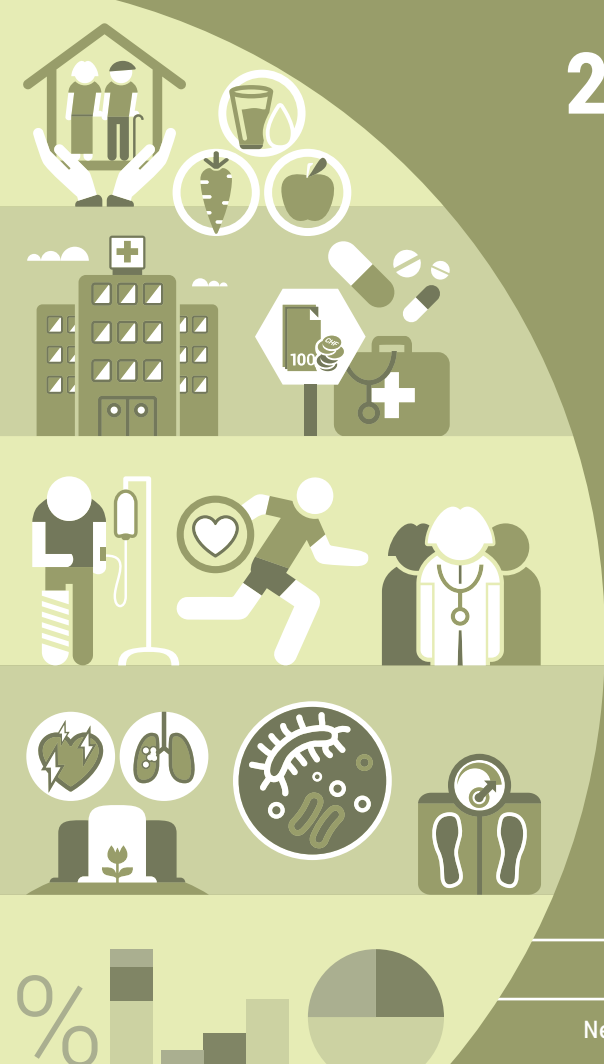


# 2020



## 14

Health

Neuchâtel 2021

## Health

Pocket Statistics 2020



Schweizerische Eidgenossenschaft  
Confédération suisse  
Confederazione Svizzera  
Confederaziun svizra

Swiss Confederation

Federal Department of Home Affairs FDHA  
**Federal Statistical Office FSO**

**Published by:** Federal Statistical Office (FSO)

**Information:** [gesundheit@bfs.admin.ch](mailto:gesundheit@bfs.admin.ch), tel. +41 58 463 67 00

**Editor:** Jean-François Marquis, FSO; Tania Andreani, FSO

**Series:** Swiss Statistics

**Topic:** 14 Health

**Original text:** French

**Translation:** FSO language services

**Layout:** DIAM Section, Prepress/Print

**Graphics:** DIAM Section, Prepress/Print

**Map:** DIAM Section, ThemaKart

**Online:** [www.statistics.admin.ch](http://www.statistics.admin.ch)

**Print:** [www.statistics.admin.ch](http://www.statistics.admin.ch)  
Federal Statistical Office, CH-2010 Neuchâtel,  
[order@bfs.admin.ch](mailto:order@bfs.admin.ch), tel. +41 58 463 60 60  
Printed in Switzerland

**Copyright:** FSO, Neuchâtel 2021  
Reproduction with mention of source authorised.

**FSO number:** 1543-2000

# Table of contents

<b>1</b>	<b>Introduction</b>	<b>4</b>
<hr/>		
<b>2</b>	<b>Health determinants</b>	<b>5</b>
<hr/>		
2.1	Social situation and employment	5
2.2	Health behaviour	8
<hr/>		
<b>3</b>	<b>Population's health</b>	<b>12</b>
<hr/>		
3.1	General health and mortality	12
3.2	Cardiovascular diseases and diabetes	16
3.3	Cancer	18
3.4	Musculoskeletal disorders	20
3.5	Infectious diseases	21
3.6	Mental health	22
3.7	Disabilities	24
3.8	Accidents	25
3.9	Births and health of newborns	26
<hr/>		
<b>4</b>	<b>Health system</b>	<b>28</b>
<hr/>		
4.1	Hospitals	28
4.2	Nursing homes	32
4.3	Home care services	34
4.4	Doctors and dentists	36
<hr/>		
<b>5</b>	<b>Costs and funding</b>	<b>38</b>
<hr/>		
	<b>Glossary</b>	<b>41</b>
<hr/>		

# 1 Introduction

This pocket statistics offers an overview of the statistical data available in the area of health. It is published in four languages (French, German, Italian and English).

Its structure is based on the diagram below showing the links between the different aspects of health statistics. It includes four main sections which cover:

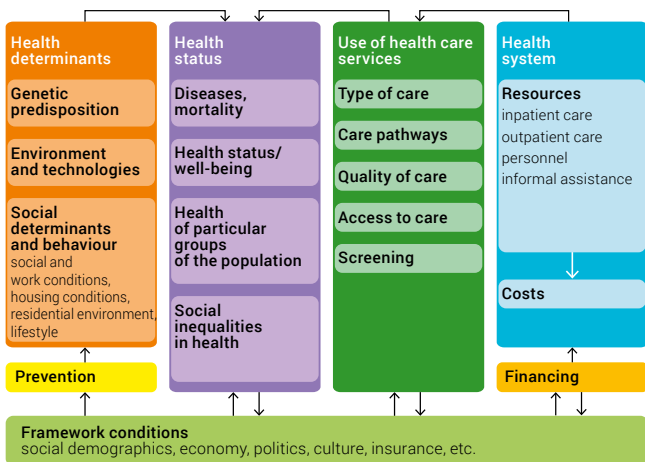
- health determinants, particularly social environments and health-influencing behaviour,
- the population's health and its various aspects,
- the health system and take-up of the various types of treatment it offers,
- the costs and funding of the health system overall.

This organisation is similar to the reference publication from the Federal Statistical Office (FSO) on Health Statistics which is published once every five years. The last edition was published in 2019.

The figures published here are the most recent figures available in november 2020. All of the data used in the graphs are available on the FSO website ([www.health-stat.admin.ch](http://www.health-stat.admin.ch)).

## Structure of the health statistics

G1



## 2 Health determinants

### 2.1 Social situation and employment

	Men	Women
(very) good self-perceived health by educational level <sup>1</sup> (2017)		
compulsory education	69.9%	64.4%
tertiary level	90.5%	91.0%
deprivation of really needed care for financial reasons <sup>2</sup> (2018)		
	2.7%	3.7%
at work <sup>3</sup> (2017)		
at least 3 physical risks	48.3%	42.2%
feeling stressed (most of the time, always)	20.9%	21.7%
worried about losing their job	15.8%	15.9%

<sup>1</sup> population aged 25 or over in a private household

<sup>2</sup> population aged 16 or over in a private household

<sup>3</sup> employed population aged 15 to 64

Sources: FSO – SHS, SILC

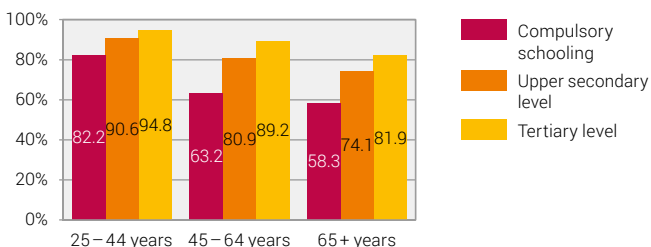
© FSO 2021

A social gradient exists when it comes to health: the lower one's social position (measured by educational attainment for example), the poorer one's health. Men aged 30 years with low educational attainment thus have a life expectancy 4.0 years shorter than their counterparts with a university education. 3% of the population are deprived of really needed medical care for financial reasons, especially dental care. Among persons at-risk-of-poverty this share increases to 7%.

### (Very) good self-perceived health according to educational level, 2017

Population aged 25 or over living in a private household

G2



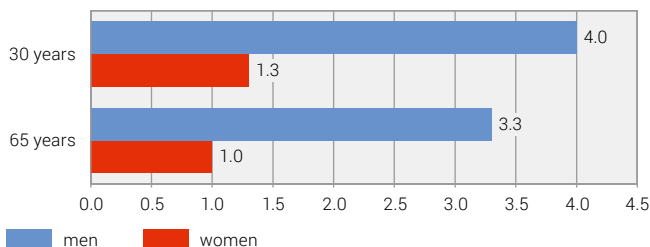
Source: FSO – Swiss Health Survey (SHS)

© FSO 2021

## Difference in life expectancy between educational levels by age, 2011–2014

In years between the highest (tertiary level) and the lowest educational level (compulsory schooling or less)

G3



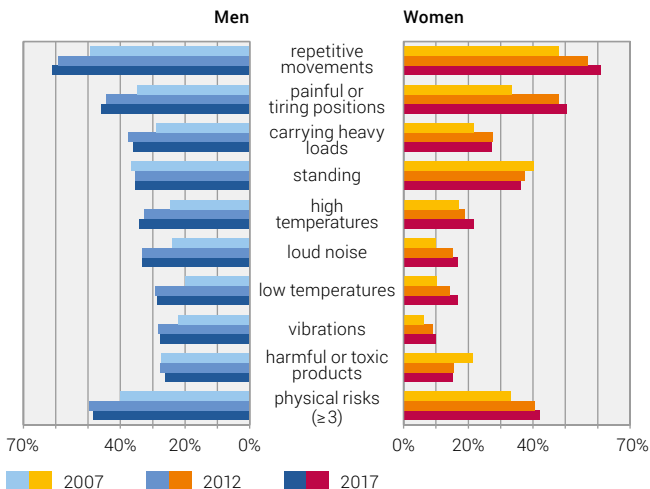
Source: Swiss National Cohort (SNC)

© FSO 2021

## Physical risks at work

Employed population aged 15 to 64 years

G4



exposed to risk for at least one quarter of working time (standing: 3/4)

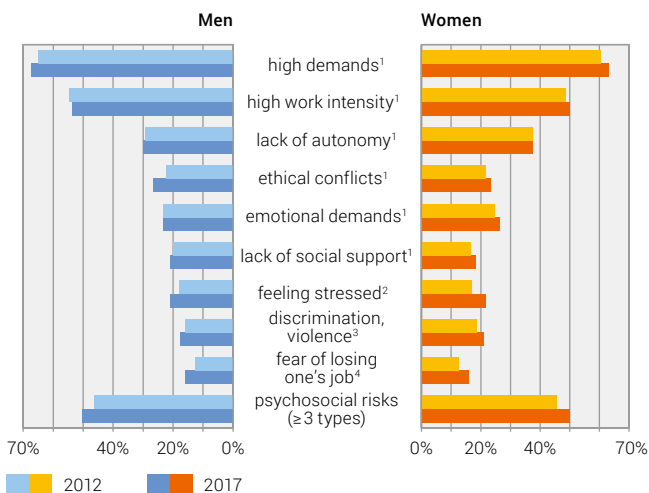
Source: FSO – Swiss Health Survey (SHS)

© FSO 2021

## Psychosocial risks at work

Employed population aged 15 to 64

G5



<sup>1</sup> most of the time or always, at least one risk

<sup>2</sup> most of the time or always

<sup>3</sup> at least 1 risk in the last 12 months

<sup>4</sup> sufficiently or quite a lot

Source: FSO – Swiss Health Survey (SHS)

© FSO 2021

Poor working conditions are a health risk. 45% of employed persons are exposed to at least three cumulated physical risks in their work such as carrying loads, loud noises or toxic products. This percentage has remained stable since 2012 but shows an increase when compared with 2007. Men are more often concerned than women. Psychosocial risks are linked to work organisation. 21% of economically active persons are stressed most of the time or always and 16% are worried about losing their job. These percentages are higher than they were in 2007. Women encounter a lack of autonomy in their work more often than men.

## 2.2 Health behaviour

2017 <sup>1</sup>	Men	Women
physically active	77.8%	73.6%
pays attention to diet	62.8%	73.4%
overweight or obese	51.0%	33.0%
smoker	31.0%	23.3%
consumes alcohol daily	14.9%	7.1%

<sup>1</sup> population aged 15 or over living in a private household

Source: FSO – Swiss Health Survey (SHS)

© FSO 2021

76% of the population were physically active in 2017, i.e. 14 percentage points more than in 2002. Persons with compulsory schooling are less often physically active than those with tertiary level education (61% compared with 79%).

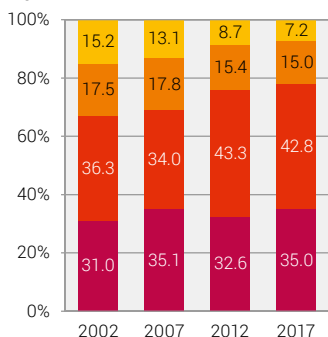
63% of men and 73% of women say that they pay attention to what they eat. This share has not changed in the overall population since 1992. The share of women who eat at least 5 portions of fruit and vegetables per day is twice that of men (28% compared with 15%).

### Physical activity

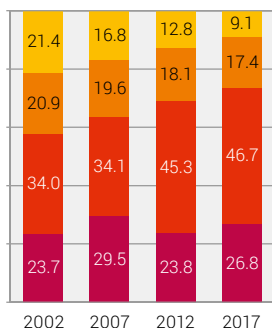
Population aged 15 or over living in a private household

G6

#### Men



#### Women



inactive

partially active

sufficiently active

well-trained

Source: FSO – Swiss Health Survey (SHS)

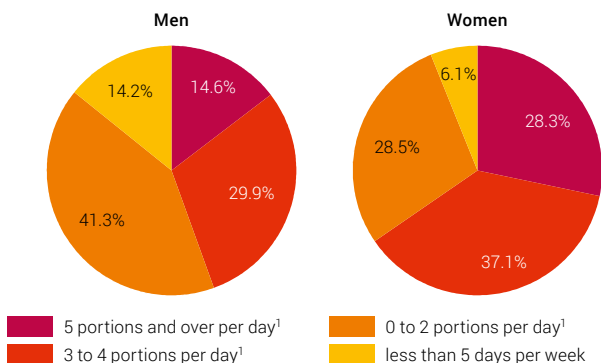
© FSO 2021



## Consumption of fruit and vegetables, 2017

Population aged 15 or over living in a private household

G7



Source: FSO – Swiss Health Survey (SHS)

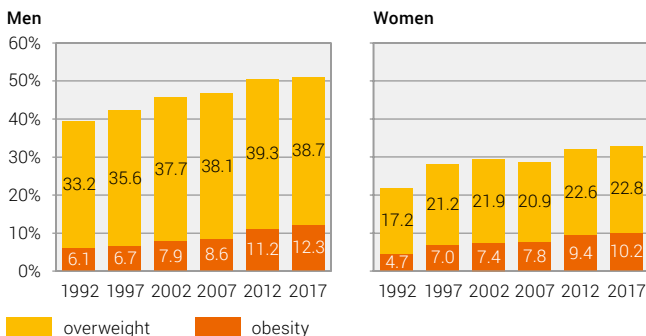
© FSO 2021

11% of the population were obese in 2017. This is twice the 1992 figure. The share of overweight people increases with age up to 74 years. The share of obese people is twice as high among men with a low level of educational attainment compared with those with a high level of educational attainment (20% compared with 10%); the difference is even greater among women (21% compared with 6%).

## Overweight and obesity

Population aged 15 or over living in a private household

G8



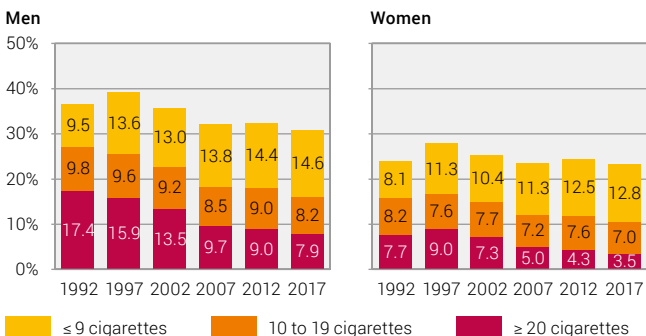
Source: FSO – Swiss Health Survey (SHS)

© FSO 2021

## Smokers by number of cigarettes per day

Population aged 15 or over living in a private household

G9



Source: FSO – Swiss Health Survey (SHS)

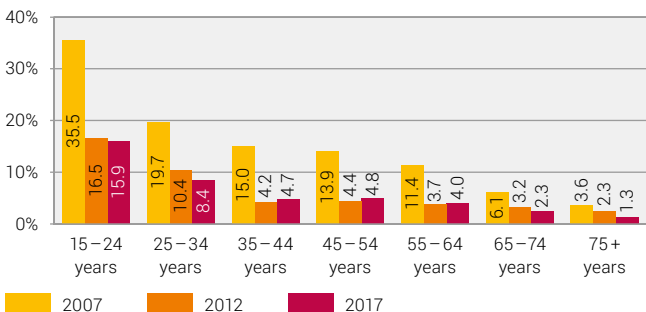
© FSO 2021

Between 1992 and 2017, the percentage of smokers fell from 37% to 31% among men and remained stable among women (23%). Smoking is most common among men aged between 25 and 34 (42%) and women between 15 and 34 (30%). 61% of smokers would like to quit. The share of non-smokers exposed to passive smoking for at least one hour per day decreased considerably between 2007 and 2017 from 16% to 6%.

## Passive smoking

Share of non-smokers exposed to other people's smoke for at least one hour per day

G10



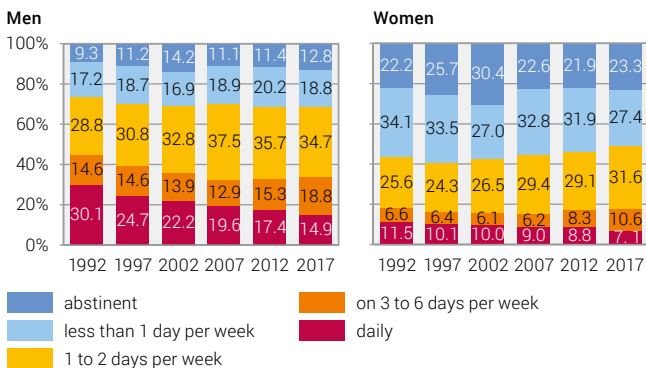
Source: FSO – Swiss Health Survey (SHS)

© FSO 2021

## Alcohol consumption

Population aged 15 or over living in a private household

G11



Source: FSO – Swiss Health Survey (SHS)

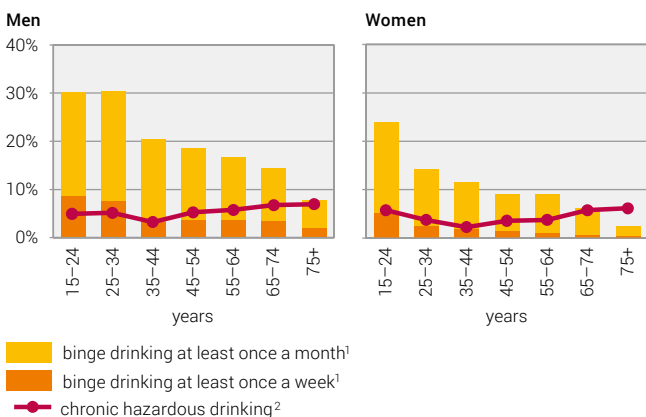
© FSO 2021

Since 1992, the share of daily consumers of alcohol has fallen from 30% to 15% among men and from 11% to 7% among women. Frequency of consumption increases with age. In 2017, chronic hazardous drinking was observed among 5% of the population and 16% got drunk at least once a month. Young men are most affected by binge drinking.

## Hazardous drinking, 2017

Population aged 15 or over living in a private household

G12



<sup>1</sup> binge drinking: standard-sized glasses of alcohol on one occasion: M:  $\geq 5$ , W:  $\geq 4$

<sup>2</sup> chronic hazardous drinking, per day in standard-sized glasses M:  $\geq 4$ , W:  $\geq 2$

Source: FSO – Swiss Health Survey (SHS)

© FSO 2021

## 3 Population's health

### 3.1 General health and mortality

	Men	Women
life expectancy at birth in years (2019)	81.9	85.6
healthy life expectancy at birth in years (2017)	69.8	70.8
(very) good self-perceived health <sup>1</sup> (2017)	85.9%	83.5%
long-standing health problem <sup>1</sup> (2017)	30.5%	34.7%
total deaths (2018)	32 398	34 690
cardiovascular diseases	9 418	11 178
cancer	9 545	7 815
dementia	2 004	4 450
accidents	1 409	1 336

<sup>1</sup> population aged 15 or over living in a private household

Sources: FSO – SHS, BEVNAT, STATPOP, CoD

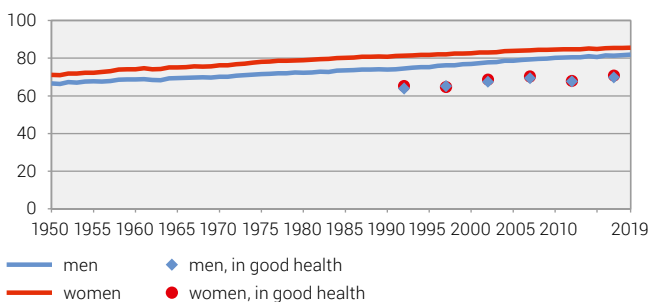
© FSO 2021

Since 1990, life expectancy at birth has increased by 7.9 years among men and by 4.8 years among women. It is among the highest world wide. Healthy life expectancy is around 70 years. It takes into account self-perceived health and the difference between men and women is slight.

### Life expectancy and healthy life expectancy at birth

In years

G13



The 2012 data relating to healthy life expectancy are not directly comparable with those from other years because of a change in the answer modalities concerning self-perceived health.

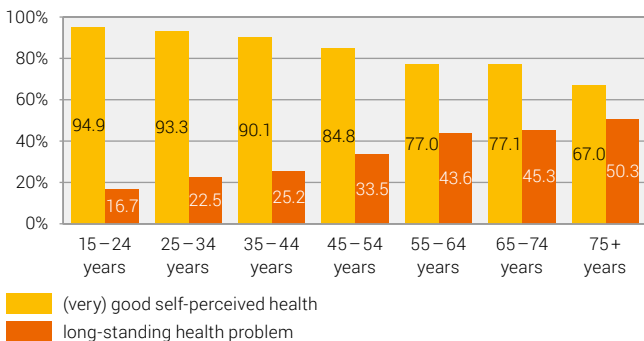
Sources: FSO – BEVNAT, ESPOP, STATPOP and SHS

© FSO 2021

## Self-perceived health and long-standing problems, 2017

Population aged 15 or over living in a private household

G14



Source: FSO – Swiss Health Survey (SHS)

© FSO 2021

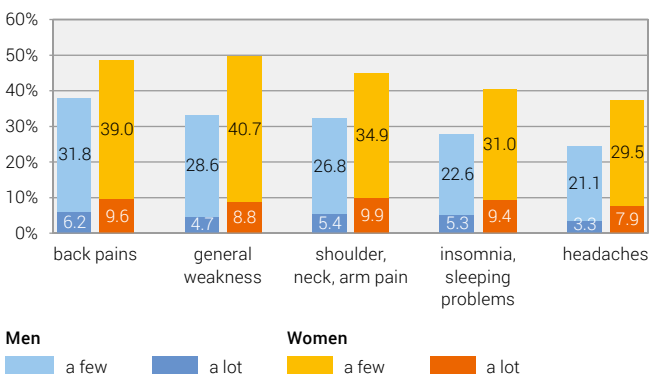
86% of men and 84% of women assessed their state of health as good or very good. The share of persons suffering from chronic health problems increases threefold between the youngest age class and the oldest.

Back pains and a feeling of general weakness are the two most common physical problems: two in five people suffer from these.

## Main physical problems, 2017

Population aged 15 or over living in a private household, over a 4 week period

G15



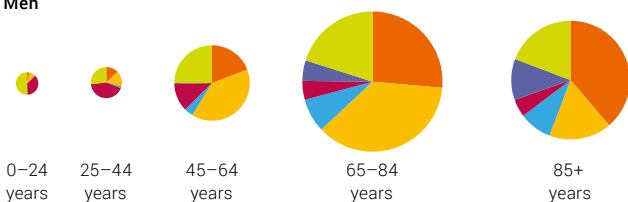
Source: FSO – Swiss Health Survey (SHS)

© FSO 2021

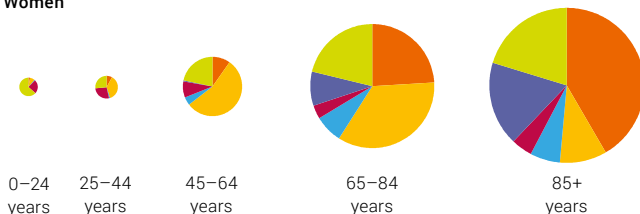
## Leading causes of death by age group, 2018

G 16

### Men



### Women



areas are proportional to the absolute number of deaths

Source: FSO – Causes of Death Statistics (CoD)

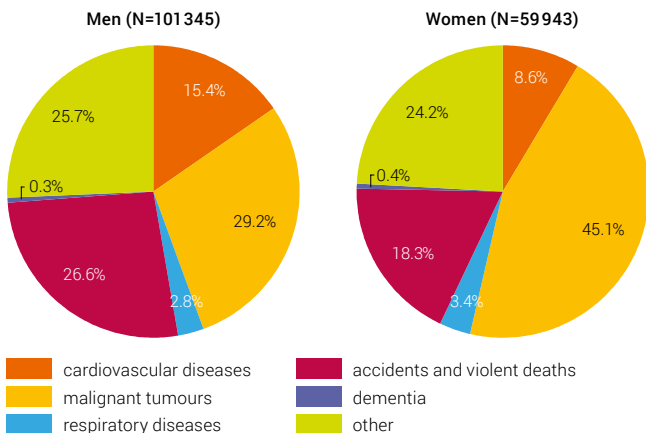
© FSO 2021

The graph shows the respective importance of causes of death by age group. Congenital diseases are the main cause of death until the age of 2. Between 2 and 15 years, the very rare cases of death are spread between a number of causes. Accidents and suicides predominate among adolescents and young people aged 16 and over. Cancer is the main cause of death among women aged over 30 and among men over the age of 40. It is superseded by cardiovascular diseases from around the age of 80.

Cancer is the biggest cause of premature mortality (before the age of 70): it is responsible for 29% of potential years of life lost (PYLL) among men and 45% among women. Accidents and violent deaths are the second cause of premature mortality. Standardised mortality rates have fallen by more than 50% since 1970. They have fallen by three quarters for cardiovascular diseases and by two fifths for cancer.

## Potential years of life lost, 2018

G17



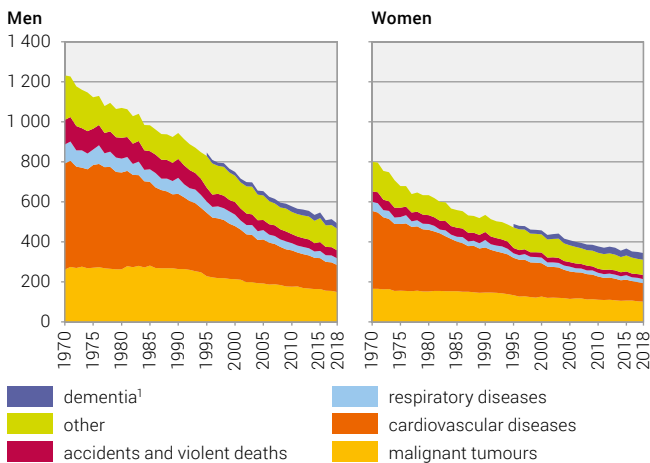
Source: FSO – Cause of Death Statistics (CoD)

© FSO 2021

## Standardised mortality rates

Per 100 000 inhabitants

G18

<sup>1</sup> surveyed from 1995 onwards

Source: FSO – Cause of Death Statistics (CoD)

© FSO 2021

## 3.2 Cardiovascular diseases and diabetes

	Men	Women
number of hospitalisations for cardiovascular diseases (2018)	64 356	47 896
number of deaths due to cardiovascular diseases (2018)	9 418	11 178
acute myocardial infarction, number of cases (2018)	9 844	5 203
stroke, number of cases (2018)	8 274	7 541
hypertension <sup>1</sup> (2017)	19.2%	16.0%
excessively high levels of cholesterol <sup>1</sup> (2017)	14.3%	10.8%
diabetes <sup>1</sup> (2017)	5.4%	3.5%

<sup>1</sup> population aged 15 or over living in a private household

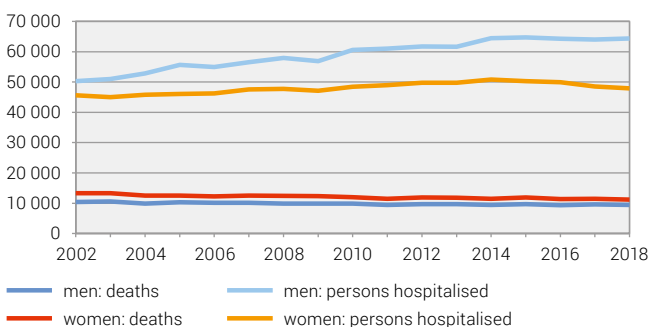
Sources: FSO – MS, CoD, SHS

© FSO 2021

Cardiovascular diseases are the first most common cause of death and the third most common cause of hospitalisation. Since 2002, the number of hospitalisations for cardiovascular diseases has increased by 17% mainly as a result of increasing population numbers and an ageing population. Over the same period, the number of deaths caused by these illnesses however has fallen by 13%. In 2018, 15 047 people (two thirds of whom were men) suffered an acute myocardial infarction and 2193 people died from this. The respective numbers for strokes are 15 815 (slightly over half of which are men) and 2736.

### Deaths and persons hospitalised due to cardiovascular diseases

G19



Source: FSO – Cause of Death Statistics (CoD) and Hospital Medical Statistics (MS)

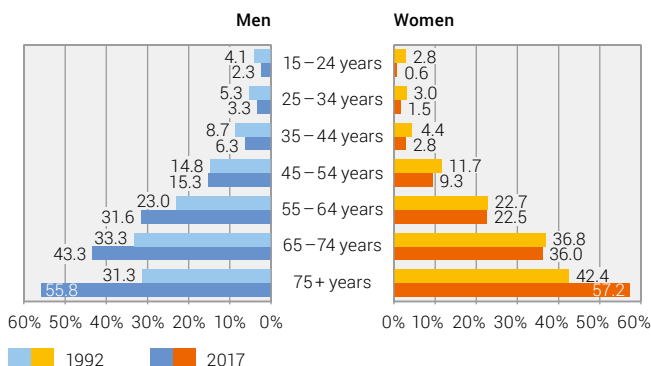
© FSO 2021



## Persons with hypertension

Population aged 15 or over living in a private household

G20



Source: FSO – Swiss Health Survey (SHS)

© FSO 2021

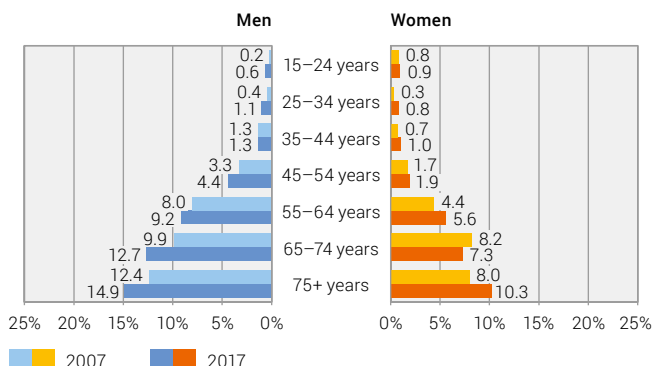
The share of persons suffering from hypertension increased from 14% to 18% between 1992 and 2017. The share of persons with excessively high levels of cholesterol increased from 9% in 2002 to 13% in 2017.

In 2017, 5% of men suffered from diabetes compared with just over 4% in 2007. Among women, the percentage has not changed in 10 years (3%). Persons with a low level of educational attainment are twice as likely to suffer from diabetes as those with a tertiary level education (8% compared with 4%).

## Persons with diabetes

Population aged 15 or over living in a private household

G21



Source: FSO – Swiss Health Survey (SHS)

© FSO 2021

### 3.3 Cancer

2013–2017 <sup>1</sup>	Men		Women	
	New cases	Deaths	New cases	Deaths
all cancers	23 116	9 392	19 655	7 647
lung, bronchi, trachea	2 741	1 999	1 830	1 236
breast			6 239	1 369
prostate	6 366	1 344		
colon-rectum	2 525	921	1 976	753
melanoma	1 519	185	1 339	127
cancer among children <sup>2</sup> (all types)	122	11	99	12

<sup>1</sup> annual average for the period

<sup>2</sup> 0–14 years

Source: FSO, NACR, ChCR – National Cancer Statistics

© FSO 2021

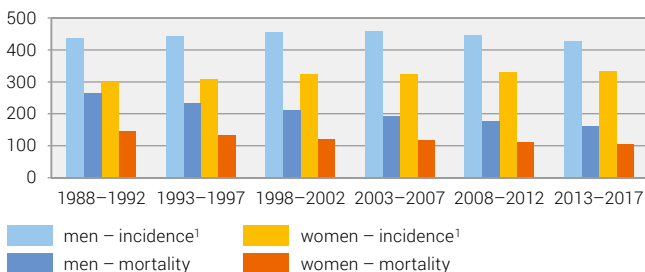
More than 40 000 new cases of cancer are diagnosed every year. More than one in five will develop a cancer before the age of 70. The rate of new cases has slowly increased among women. After increasing among men, it has fallen since the penultimate period. Mortality is declining. Prostate cancer is the most common cancer among men while breast cancer is the most common cancer among women.

Every year, about 221 children aged 14 and under get cancer and about 23 die from this disease. Leukaemia (32%) and tumours of the central nervous system (23%) are the most common types of cancer in children.

#### Cancers (total)

Rate per 100 000 inhabitants, European standard

G22



<sup>1</sup> new cases estimated on the basis of cancer registry data; excl. non-melanoma skin cancer

Sources: NACR – New cases; FSO – Deaths

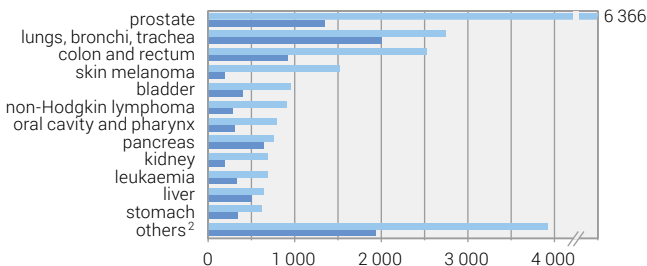
© FSO 2021

## Cancers by site, 2013–2017

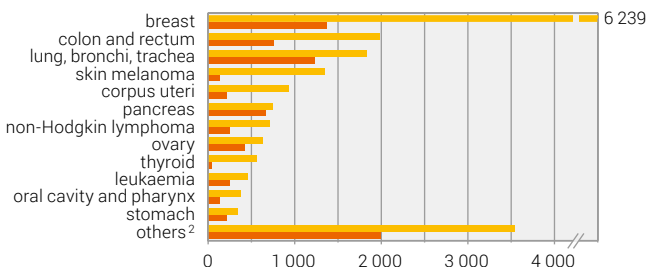
Average number per year

G23

### Men



### Women



new cases<sup>1</sup> deaths

<sup>1</sup> new cases estimated on the basis of cancer registry data

<sup>2</sup> new cases excl. non-melanoma skin cancer

Sources: NACR – New cases; FSO – Deaths

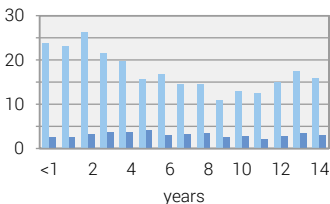
© FSO 2021

## Cancers among children, 1988–2017

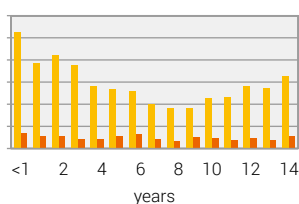
Rate per 100 000 children

G24

### Boys



### Girls



incidence mortality

Source: FSO, ChCR – National Cancer Statistics

© FSO 2021

### 3.4 Musculoskeletal disorders

2019	Men	Women
persons hospitalised for musculoskeletal disorders	67 757	81 953
hip replacement	11 502	14 193
knee prosthesis	8 809	12 366

Source: FSO – Hospital Medical Statistics (MS)

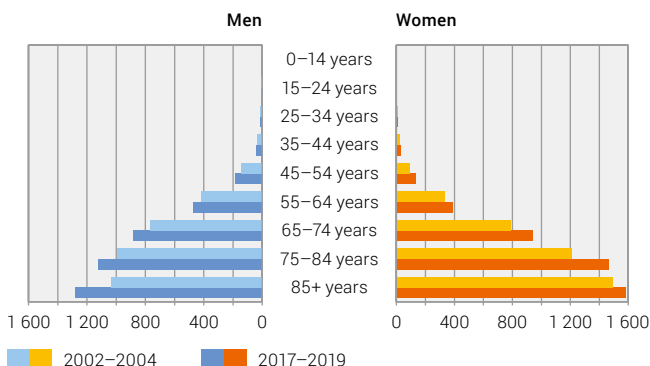
© FSO 2021

Musculoskeletal disorders are the second most common cause for hospitalisation, after accidents. Disorders of the limb joints (osteoarthritis, arthritis) and back problems are the reasons for 53% and 24% of hospitalisations for musculoskeletal disorders. The use of prostheses is sometimes necessary. In 2019, 25 695 persons were hospitalised for hip replacements. This is 68% more than in 2002. Knee prostheses are less common (21 175).

#### Persons hospitalised for hip replacements

Rate per 100 000 inhabitants

G25



Source: FSO – Hospital Medical Statistics (MS)

© FSO 2021

### 3.5 Infectious diseases

	2019
new diagnoses of HIV	421
rates of new HIV diagnoses per 100 000 inhabitants	4.9
new cases of tuberculosis	437
rates of new cases of tuberculosis per 100 000 inhabitants	5.1

Source: FOPH – Reporting System for Notifiable Infectious Diseases

© FSO 2021

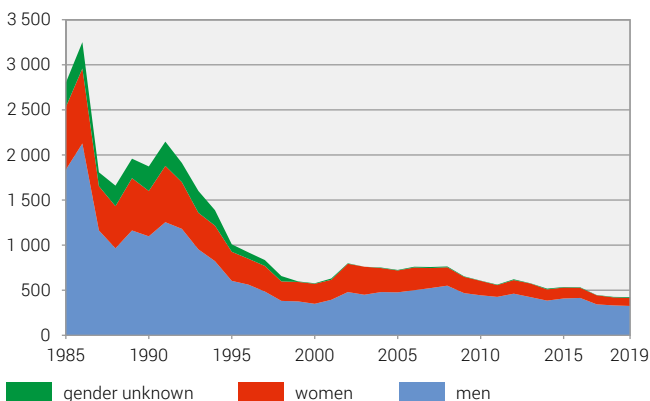
The number of new diagnoses with the HIV virus has fallen since 2009. It had already fallen considerably during the 1990s. 40% of new diagnoses in 2019 concerned men who had sexual relations with men.

Since the 1980s, the number of new cases of tuberculosis has been divided by 2.5. Three quarters of cases are found among persons of foreign origin.

#### HIV diagnoses

Laboratory reports

G26



data as at September 2020

Source: FOPH – Reporting System for Notifiable Infectious Diseases

© FSO 2021

## 3.6 Mental health

	Men	Women
medium or high psychological distress <sup>1</sup> (2017)	11.7%	18.3%
major depression <sup>1</sup> (2017)	7.8%	9.5%
treatment for psychological problems <sup>1</sup> (2017)	4.4%	7.7%
suicides, excluding assisted suicide (2018)	712	290

<sup>1</sup> population aged 15 or over living in a private household

Sources: FSO – SHS, CoD

© FSO 2021

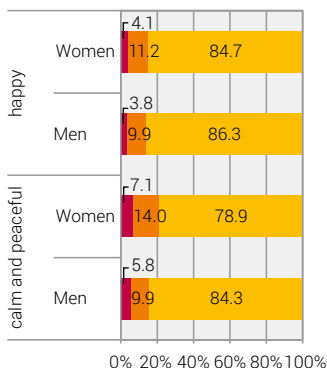
The vast majority of the population experience positive emotions far more often than negative emotions. 15% of the population, however, show signs of medium (11%) or high psychological distress (4%). Depression is the most common mental disorder. 8% of men and 10% of women suffered from major depression in 2017. The share of persons affected tends to decrease with age.

### Emotional state, 2017

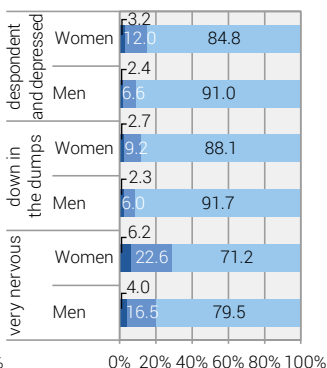
Over a 4 week period. Population aged 15 or over living in a private household

G27

#### Positive emotional state



#### Negative emotional state



■ rarely/never  
■ sometimes  
■ always/mostly

■ always/mostly  
■ sometimes  
■ rarely/never

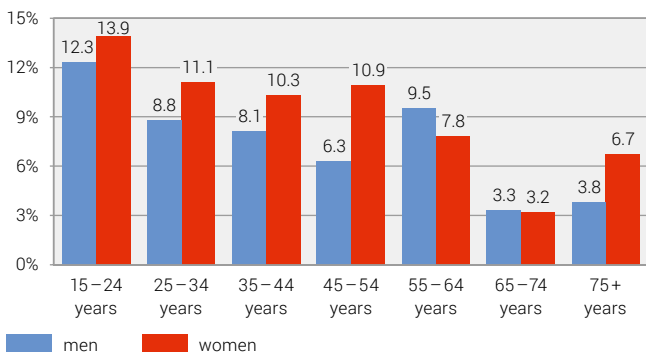
Source: FSO – Swiss Health Survey (SHS)

© FSO 2021

## Major depression, 2017

Persons suffering from moderate to serious depression.  
Population aged 15 or over living in a private household

G28



Source: FSO – Swiss Health Survey (SHS)

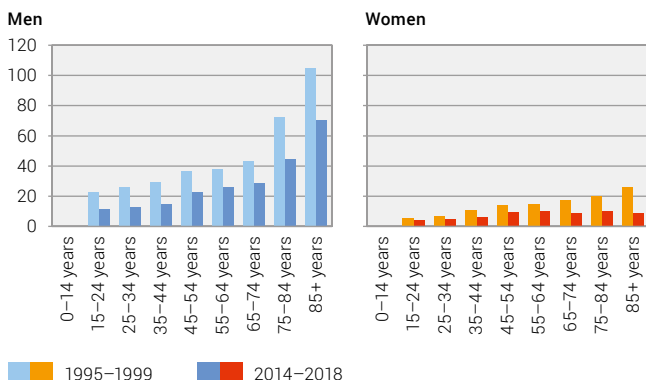
© FSO 2021

1002 people (71% of whom men) committed suicide in 2018, excluding cases of assisted suicide. The standardised suicide rate has fallen by more than two fifths since 1995. The suicide rate increases considerably with age among men. If a concomitant disease is indicated when suicide is announced, depression is involved 6 times out of 10.

## Suicide by age and sex (excluding assisted suicide)

Rate per 100 000 inhabitants

G29



Source: FSO – Cause of Death Statistics (CoD)

© FSO 2021

## 3.7 Disabilities

	%	Persons
eyesight: considerable or full impairment <sup>1</sup> (2017)	1.1	77 000
hearing: considerable or full impairment <sup>1</sup> (2017)	1.1	78 000
locomotion: cannot walk or can only walk a few steps <sup>1</sup> (2017)	1.0	67 000
speech: considerable or full impairment <sup>1</sup> (2017)	0.4	28 000
persons with disabilities <sup>1</sup> (2017)	18.0	1 264 000
severely limited	4.1	285 000
recipients of disability pensions (AI) (31.12.2019)		217 700

<sup>1</sup> population aged 15 or over in a private household

Sources: FSO – SHS; FSIO – AI Statistics

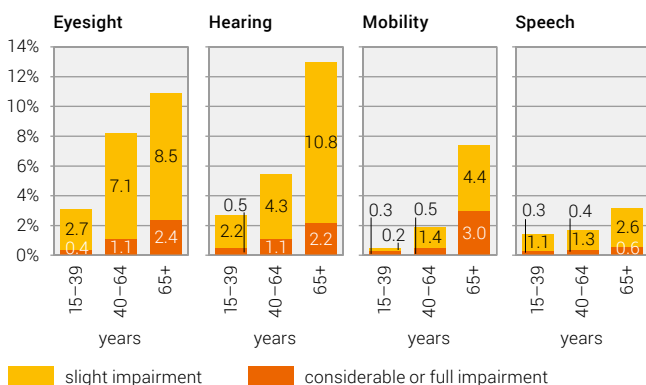
© FSO 2021

Functional limitations increase considerably with age. Visual impairments affect some 77 000 persons, 35 000 of whom are aged 65 or over. Around 1 300 000 persons are considered to be disabled under the Disability Discrimination Act, of whom 300 000 are severely limited in activities people usually do.

### Functional limitations, 2017

Population aged 15 or over living in a private household

G30



Source: FSO – Swiss Health Survey (SHS)

© FSO 2021



### 3.8 Accidents

	Men	Women
accidents at home, in the garden, during sport and games <sup>1</sup> (2017)	19.0%	14.5%
accidents at work <sup>2</sup> (2017)	7.2%	3.8%
road accidents <sup>1</sup> (2017)	2.2%	1.5%
deaths in road accidents (2019)	139	48

<sup>1</sup> population aged 15 or over living in a private household

<sup>2</sup> economically active persons aged 15 and over

Sources: FSO – SHS, SVU

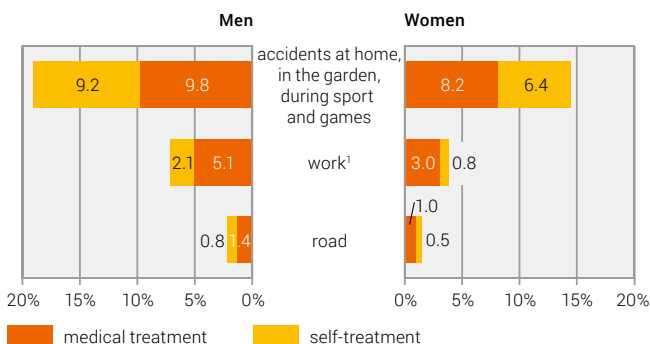
© FSO 2021

Accidents are one of the main causes of premature mortality and the first most common cause of hospitalisation. People most commonly experience accidents (often falls) at home, in the garden and during sports or games. Employed men are almost twice as likely as women to have accidents at work (7% compared with 4%). Almost 2% of the population have been involved in road accidents. In 2019, road accidents were responsible for 187 deaths, almost three quarters of these were men.

#### Accident victims by type of accident and treatment, 2017

Population aged 15 or over living in a private household

G31



<sup>1</sup> only employed persons

Source: FSO – Swiss Health Survey (SHS)

© FSO 2021

### 3.9 Births and health of newborns

	2019
live births	86 172
average age at maternity	32.1
rate of caesareans	32.0%
premature births (<37 completed weeks of pregnancy)	6.7%
low birth weight births (<2500 g)	6.1%
stillbirths	4.0‰
infant mortality	3.3‰

Sources: FSO – BEVNAT, MS, CoD

© FSO 2021

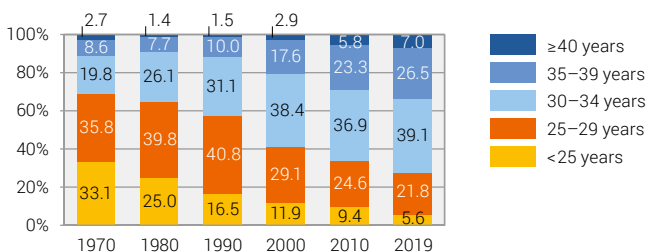
The average age of mothers at maternity has continued to increase since the 1970s. In 2019, the share of women under the age of 30 among those who had given birth was less than 30% compared with almost 70% in 1970. The increase in age at maternity may lead to a decrease in fertility and an increase in certain risks such as spontaneous twin pregnancies or chromosomal abnormalities.

96% of births take place at the hospital and a third of deliveries are by caesarean. The rate of caesareans can vary by twofold depending on the region.

283 infants under the age of one died in 2019. This corresponds to a rate of 3.3 deaths per thousand live births. Just over half of these deaths occurred 24 hours following the birth. Above all infant deaths affect children with a very low birth weight or those born very prematurely. The same year 344 stillbirths were registered.

#### Live births by age of mother

G32



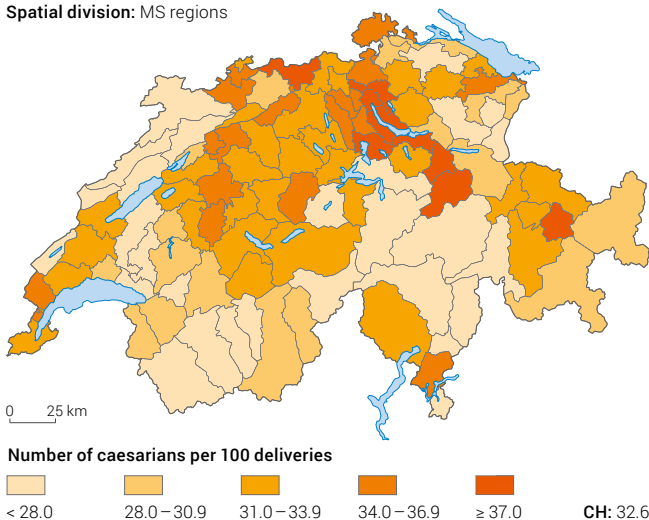
Source: FSO – Vital Statistics (BEVNAT)

© FSO 2021

## Caesarian delivery rate, 2015–2019

G 33

Spatial division: MS regions



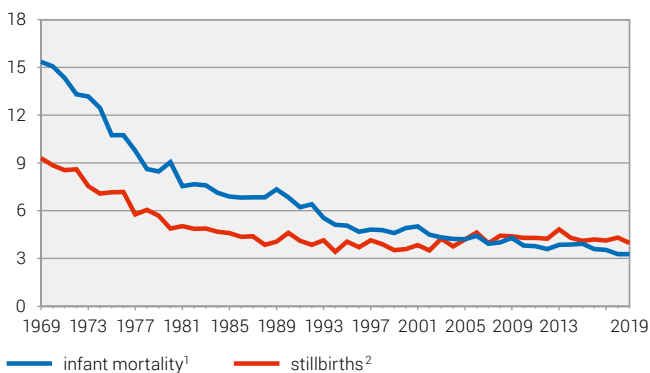
Source: FSO – Hospital medical statistics (MS)

© FSO 2021

## Stillbirths and infant mortality

Yearly rate per 1000

G 34



<sup>1</sup> rate per 1000 life births

<sup>2</sup> rate per 1000 births

Source: FSO – Vital statistics (BEVNAT)

© FSO 2021

## 4 Health system

### 4.1 Hospitals

	2019
hospitals	281
beds	38 057
personnel (full-time equivalents)	170 928
hospitalisation cases	1 472 758
hospitalisation rate (for 1000 inhabitants)	118.7
average length of stay in acute care (in days)	5.2
average daily cost of acute care (CHF)	2 303

Sources: FSO – KS, MS

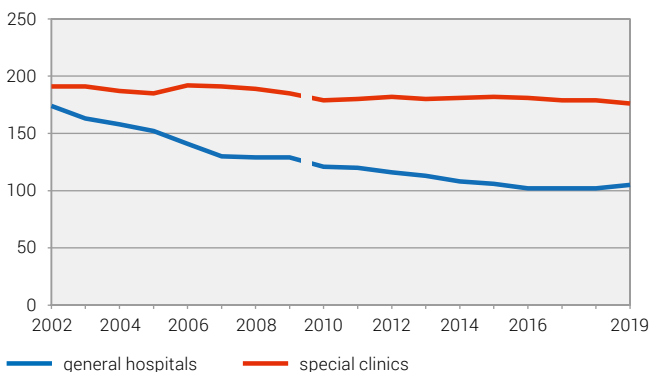
© FSO 2021

In 2019, 281 hospitals carried out their activities over 580 sites. Since 2002, the number of general hospitals has fallen by 39% whereas the number of special clinics has remained almost stable (–7%). However, in special clinics the number of beds has fallen the most over the same period (–18%) whereas the decline has been more limited in general hospitals (–11%).

### General hospitals and special clinics

Number of hospitals

**G35**



break in series as of 2010: revision of survey

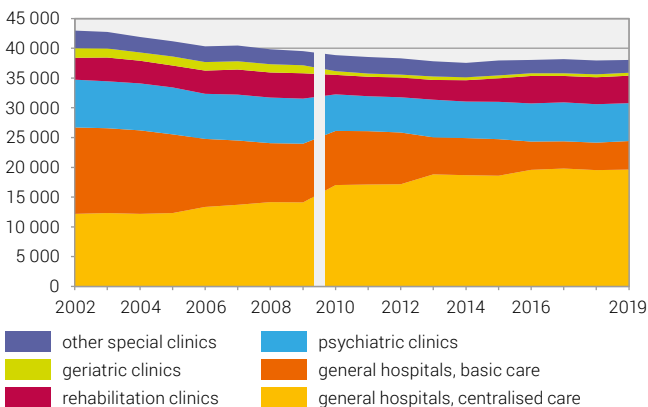
Source: FSO – Hospital Statistics (KS)

© FSO 2021

## Hospital beds by type of establishment

Number of beds

G36



Source: FSO – Hospital Statistics (KS)

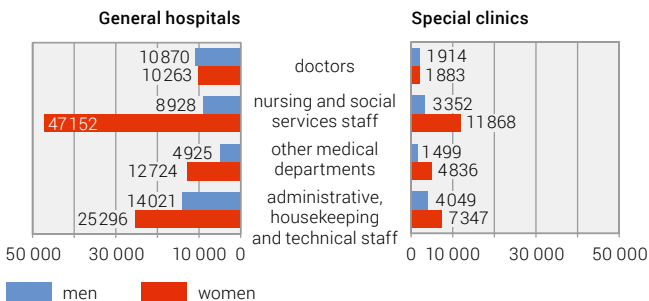
© FSO 2021

In 2019, hospital personnel accounted for 170 928 full-time equivalent jobs. This is 42% more than in 2002. Eight in ten jobs are in general hospitals. 71% of jobs are held by women, yet women are still in the minority among doctors (49%). Nursing and social services staff make up 42% of fulltime equivalent jobs and doctors make up 15% of fulltime equivalent jobs.

## Hospital personnel by function and sex, 2019

In full-time equivalents

G37



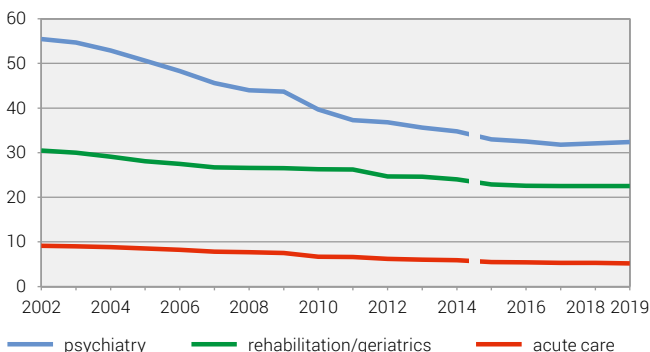
Source: FSO – Hospital Statistics (KS)

© FSO 2021

## Average length of stay in hospitals

In days

G38



break in series as of 2015: new definition and new data source

Sources: FSO – Hospital Statistics (KS),  
Hospital Medical Statistics (MS) from 2015

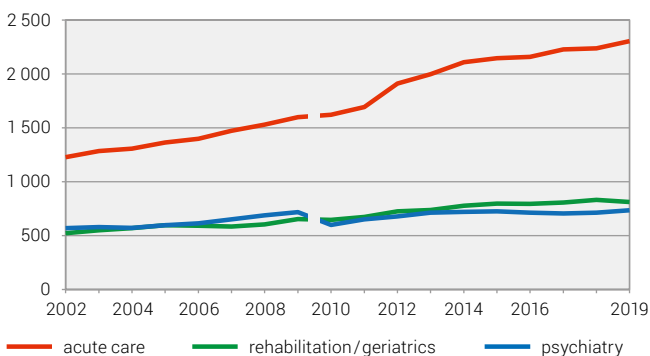
© FSO 2021

In 2019, the average length of stay in acute care was 5.2 days. The average length of stay in psychiatric services was six times longer (32.4 days). Since 2002, the average stay has continued to decrease. The average cost of a day's hospitalisation increased during the same period. There has been a 88% increase in the cost of acute care. A day's hospitalisation in acute care cost CHF 2303 on average in 2019.

## Average hospitalisation costs

In CHF per day and patient

G39



break in series as of 2010: revision of survey

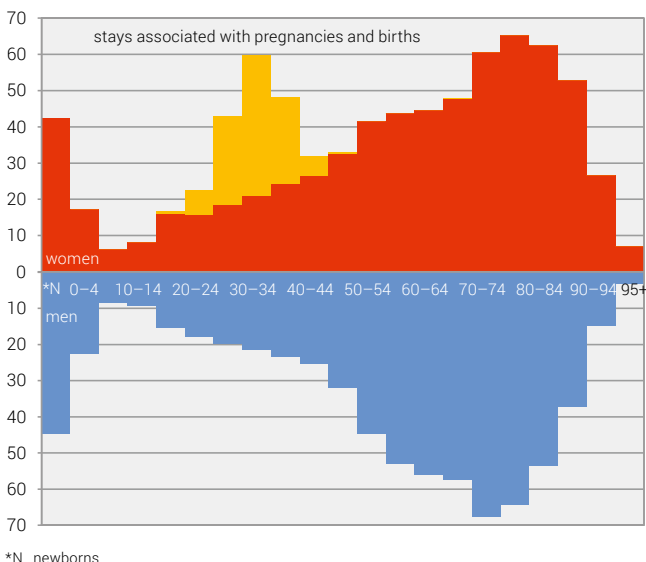
Source: FSO – Hospital Statistics (KS)

© FSO 2021

## Hospitalisation cases by age, 2019

Number of cases (thousands)

G40



Source: FSO – Hospital Medical Statistics (MS)

© FSO 2021

In 2019, the number of hospitalisations rose to 691 611 for men and 781 147 for women. Excluding stays associated with pregnancies and births, the number of hospitalisations by men and women is very close. Up to the age of 75, the number of hospitalisations is generally greater among men than it is among women. After this age, this trend is reversed.

## 4.2 Nursing homes

	2019
nursing homes	1 563
personnel, full-time equivalents	98 576
residents as at 31.12.	92 654
men	27 498
women	65 156
accommodation rate in nursing homes among persons aged $\geq 80$ years as at 31.12.	15.0%
average length of stay (in days)	881
average daily cost (CHF)	307

Source: FSO – Statistics on Medico-Social Institutions (SOMED)

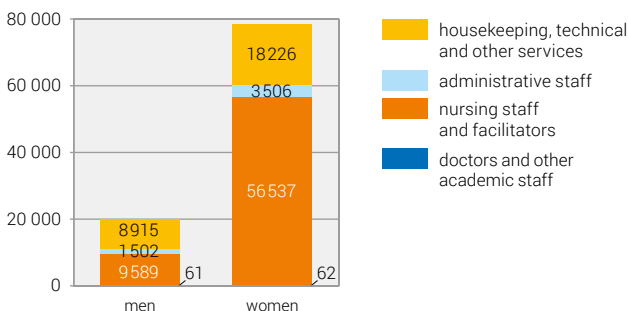
© FSO 2021

The 1563 nursing homes for older people employed personnel equating to 98 576 fulltime equivalent jobs in 2019. Nursing staff and facilitators make up 67% of this figure. Eight in ten fulltime equivalents (FTE) are filled by women. Persons aged 80 and over (women in 76% of cases) represent three quarters of residents who stayed in nursing homes in 2019.

### Nursing home personnel, by occupational group and gender, 2019

In full-time equivalents

G41



Source: FSO – Statistics on Medico-Social Institutions (SOMED)

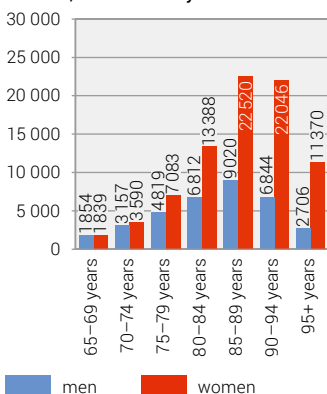
© FSO 2021



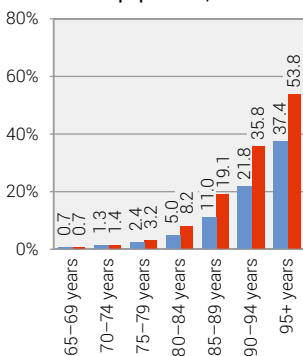
## Persons living in a nursing home, 2019

G 42

Number, for the entire year



Share in total population, as at 31.12.



Sources: FSO – Statistics on Medico-Social Institutions (SOMED),  
Population and Household Statistics (STATPOP)

© FSO 2021

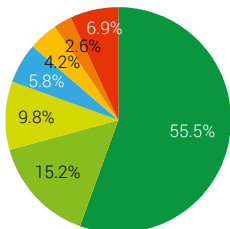
47% of older people in nursing homes stay there for less than one year. The proportion of older people staying in nursing homes for 5 years or more is 15%. The average length of a stay is almost two and a half years (881 days). The perday cost was CHF 307 on average.

## Length of stay in nursing homes, 2019

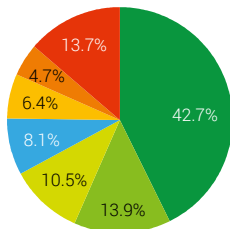
Persons discharged from nursing homes, 2019

G 43

Men (N=13 729)



Women (N=23 799)



Source: FSO – Statistics on Medico-Social Institutions (SOMED)

© FSO 2021

### 4.3 Home care services

	2019
personnel (full-time equivalents)	24 755
clients	394 444
men	162 820
women	231 624
rate of recourse to home care among persons aged ≥80 years	29.2%
average annual cost per client (CHF)	6 754

Source: FSO – Statistics on Home Care Services (SPITEX)

© FSO 2021

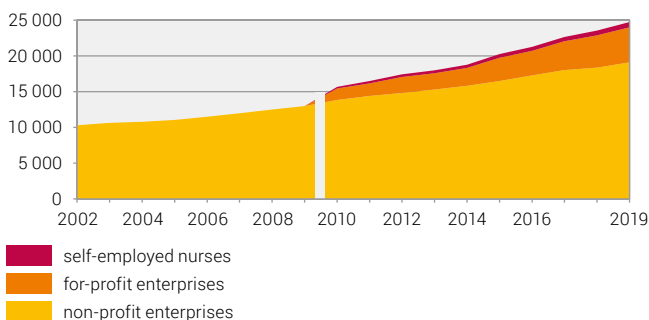
In 2019, 77% of personnel in full-time equivalents in home care services were employed by non-profit enterprises. Jobs in home care services have increased by 58% since 2010.

Almost half (42%) of the persons who benefit from home care services are aged 80 years or over. Women – who have a longer life expectancy than men – are overrepresented in the older population. Within couples it is also more common that women assist their life partner than the other way round. These factors explain why women make use of home care services more often than men.

### Jobs in home care services

In full-time equivalents

**G44**



survey modified in 2010 to include for-profit enterprises and self-employed nurses

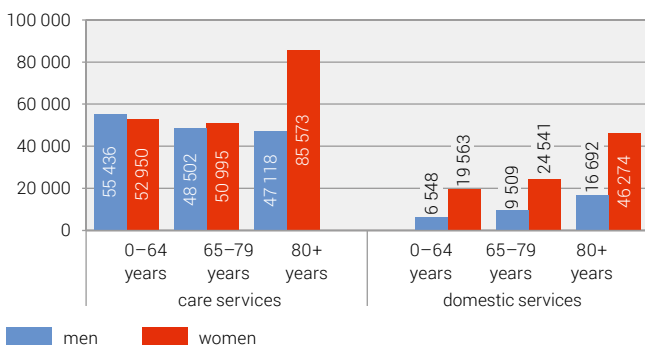
Source: FSO – Statistics on Home Care Services (SPITEX)

© FSO 2021

## Clients using home care services, 2019

Number by service type and age

G45



Source: FSO – Statistics on Home Care Services (SPITEX)

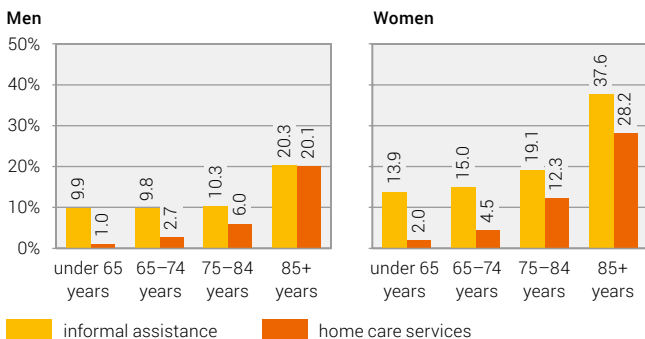
© FSO 2021

The share of persons receiving informal care from relatives for care or daily tasks is greater than that of persons making use of home care services. Furthermore, 59% of persons who make use of home care services are also helped by relatives.

## Recourse to informal assistance and home care services, 2017

Population aged 15 or over living in a private household, over a 1 year period

G46



Source: FSO – Swiss Health Survey (SHS)

© FSO 2021

## 4.4 Doctors and dentists

doctors in doctors' practices and outpatient centres <sup>1</sup> , in full-time equivalents (2018)	14 963
doctors in the outpatient sector per 100 000 inhabitants (2019)	229
medical consultations (at least one) <sup>2</sup> (2017)	81.2%
dentists <sup>3</sup> (2019)	3 481
dentists <sup>3</sup> per 100 000 inhabitants (2019)	40
dental consultations, at least one <sup>2</sup> (2017)	59.6%

<sup>1</sup> with own infrastructure and annual turnover of > CHF 30 000

<sup>2</sup> population aged 15 or over living in a private household

<sup>3</sup> private practice owners

Sources: FSO – MAS, SHS; FMH, SSO

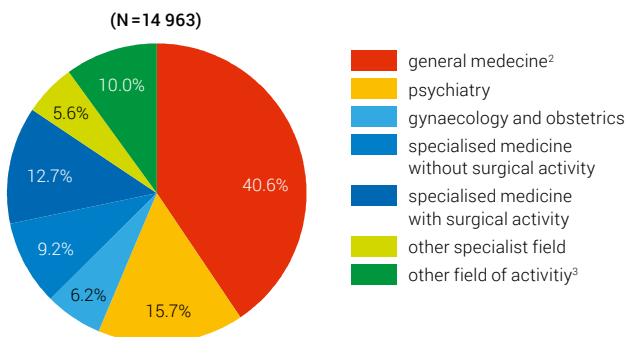
© FSO 2021

40% of doctors working in doctors' practices or outpatient centres in 2018 were general practitioners (specialist qualifications: general internal medicine and paediatrics, medical practitioner). The number of doctors working in the ambulatory sector per 100 000 inhabitants increased from 205 in 2010 to 229 in 2019 (+12%).

### Activities of physicians in medical practices<sup>1</sup>, 2018

In full-time equivalents

**G47**



<sup>1</sup> medical practices and ambulatory centres with their own infrastructure and annual turnover of > CHF 30 000

<sup>2</sup> specialist titles: general internal medicine, paediatrician; general practitioner

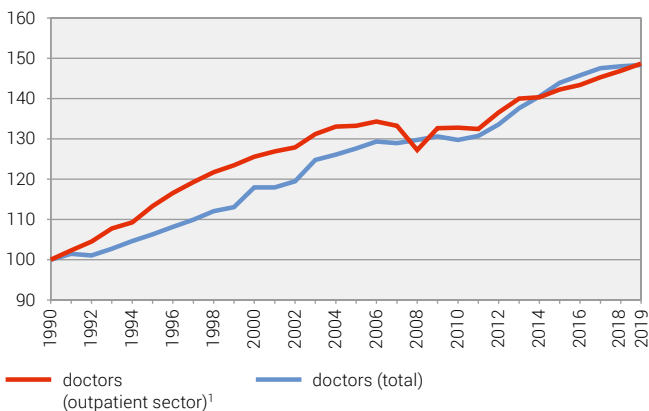
<sup>3</sup> main activity does not correspond to any postgraduate medical degree

Source: FSO – Structural data from medical practices and ambulatory centres (MAS) © FSO 2021

## Doctors

Index for the number of doctors per 100 000 inhabitants, 1990=100

G48



Source: FMH

© FSO 2021

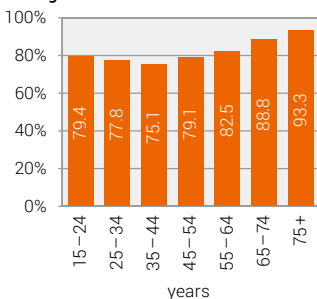
81% of the population visit a doctor at least once a year (all medical areas). Men aged between 25 and 44 years visit a doctor the most rarely (65%). 60% of the population go to the dentist at least once a year.

## Doctors' consultations, 2017

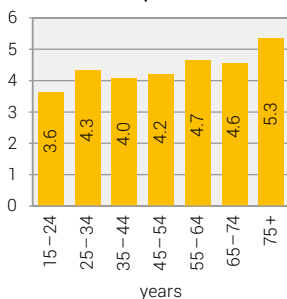
Population aged 15 or over living in a private household

G49

**At least 1 consultation during the last 12 months**



**Annual average number of consultations per inhabitant**



Source: FSO – Swiss Health Survey (SHS)

© FSO 2021

## 5 Costs and funding

	2018
health expenditure (in CHF million)	80 242
of which for	
outpatient curative care	20 753
long-term care	16 374
inpatient curative care	15 548
medical goods	12 214
health expenditure in relation to the gross domestic product (GDP)	11.2%

Source: FSO – Statistics on health care costs and funding (COU)

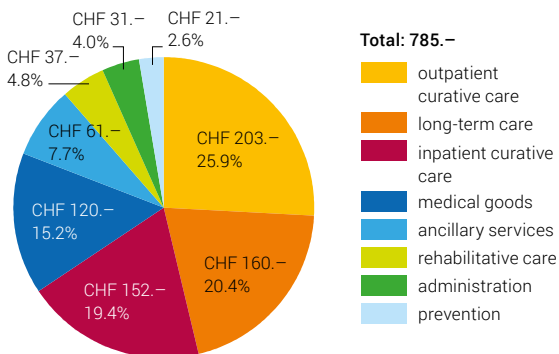
© FSO 2021

Outpatient curative care including that provided in hospitals represents over one quarter of health expenditure costs. Long-term care includes care for older people in nursing homes and home care. It generates more than a fifth of health expenditure costs, slightly more than inpatient curative care.

### Health expenditure per inhabitant, 2018

In CHF per month

G50

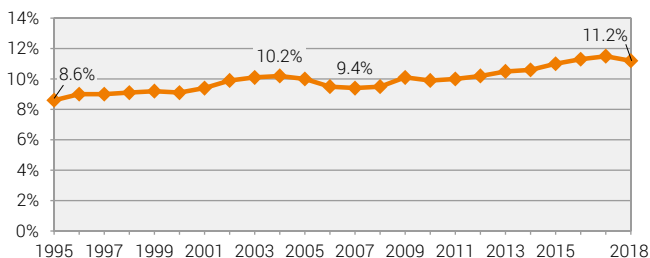


Source: FSO – Statistics on health care costs and funding (COU)

© FSO 2021

## Health expenditure in relation to GDP

G51



Source: FSO – Statistics on health care costs and funding (COU)

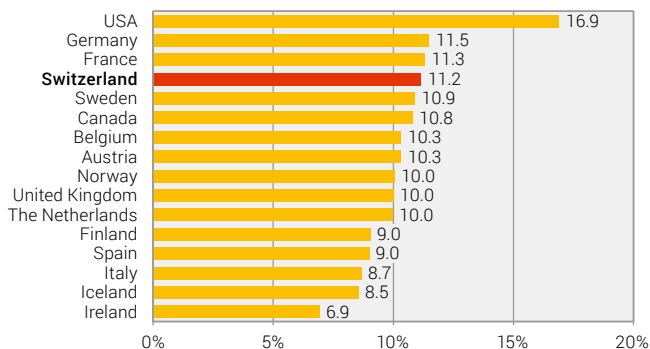
© FSO 2021

The ratio between health expenditure and the gross domestic product (GDP) has increased by 2.6 percentage points since 1995, reaching 11.2% in 2018. This value places Switzerland in the group of European countries with the highest ratio.

## Health expenditure in OECD countries, 2018

Health expenditure in relation to GDP

G52

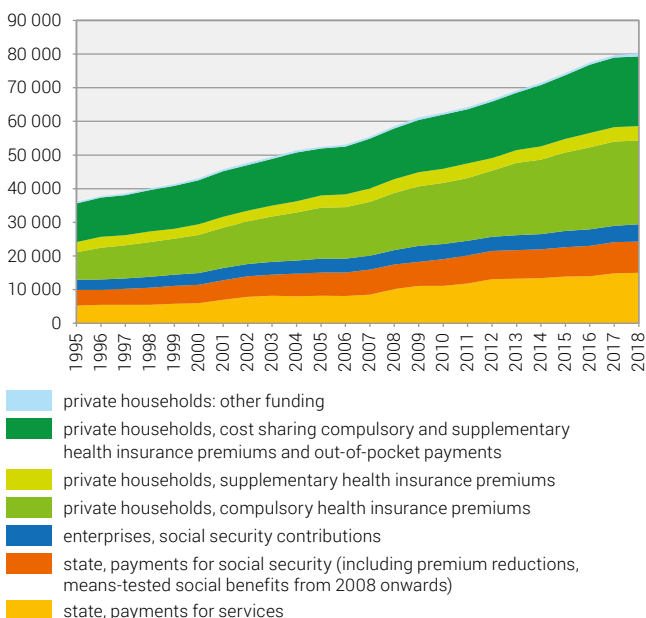
Sources: FSO – Statistics on health care costs and funding (COU);  
OECD – Health Statistics 2020

© FSO 2021

## Health expenditure funding by source

In CHF million

G53



Source: FSO – Statistics on health care costs and funding (COU)

© FSO 2021

In 2018, households financed 63% of health expenditure. Mandatory health insurance premiums from households covered 31% of health expenditure. The government's contribution to health expenditure is 30%. Over 6 in every 10 francs of this public funding correspond to payments from the cantons and communes to hospitals, nursing homes and home care services.



## Glossary

### Alcohol

*Chronic hazardous drinking*:  $\geq 4$  standard-sized glasses of an alcoholic drink (e.g. a beer) per day for men,  $\geq 2$  standard-sized glasses for women; *binge drinking*:  $\geq 5$  standard-sized glasses on a single occasion for men;  $\geq 4$  standard-sized glasses on a single occasion for women.

### Deprivation of care for financial reasons

Persons who were deprived of a dental check-up or treatment or who did not consult a doctor or follow a treatment in the course of the twelve months prior to the survey due to financial reasons despite having really a need.

### Educational level

*Compulsory education*: primary and lower secondary level education; *upper secondary level*: vocational and professional education and training programmes leading to a diploma or a federal proficiency certificate, general education programmes: academic Matura, upper-secondary specialised school; *tertiary level*: universities and institutes of technology, universities of applied sciences, advanced professional education and training.

### Functional limitations

*Eyesight*: can read a book or a newspaper (or watch the TV), including with glasses; *hearing*: can follow a conversation involving at least two people, including with a hearing aid; *locomotion*: can walk alone unaided without stopping and without being in a lot of discomfort; *speech*: speaking. *Moderate limitation*: yes, without a lot of difficulty (for locomotion: more than a few steps but less than 200 metres); *considerable or full limitation*: yes, but with a great deal of difficulty, or no (just a few steps or cannot move).

### Healthy life expectancy

The number of years that a person can expect to live in good health (from birth). Good health is defined by the fact that the persons interviewed rate their "general state of health" as (very) good. This indicator, which combines information on mortality and morbidity, is very sensitive to methodological differences.

### Hospitalisation

Hospital stay of at least 24 hours for examinations, treatments and care. Stays of less than 24 hours during which a bed is filled at night and hospital stays in the event of a transfer to another hospital or death are also considered as hospitalisations.



## Incidence

Frequency of new cases of an illness in a defined population and during a given period.

## Infant mortality

Number of deaths of children aged less than one year per 1000 live births.

## Jobs in full-time equivalents

Jobs in full-time equivalents are calculated by converting the volume of work into full-time jobs. They are calculated by dividing the total number of hours worked by the annual average of hours worked in full-time jobs.

## Obesity and the overweight

*Overweight*: BMI index between 25 and 29.9; *obese*: BMI  $\geq 30$ . The BMI index is calculated by: weight (in kg)/body height squared (in m).

## Persons with disabilities

Persons with a long-standing health problem who say that they are limited (severely or slightly) in activities of daily living.

## Physical activity

*Trained*:  $\geq 3$ x an intense physical activity per week; *sufficiently active*: 2x an intense physical activity per week or  $\geq 150$  minutes of moderate physical activity; *partially active*: 1x an intense physical activity per week or 30 to 149 minutes of moderate physical activity; *inactive*: physical activity below these thresholds.

## Potential years of life lost

The premature mortality indicator refers to deaths before the age of 70. It is calculated by adding up the total difference between age at death and this theoretical age.

## Premature births

Before the 37th completed week of pregnancy.

## Risk of poverty

Persons considered at risk of poverty are those who live in a household whose financial resources (excluding capital stock) are considerably lower than the usual income level in the country considered ( $< 60\%$  of the median equivalised disposable income).



## **Standardised rate**

Recalculated rate assuming the population studied presents the age structure by population type. This enables comparison of mortality between populations and observation of its development over long periods, neutralising the differences due to age structure, for example, from the ageing of the population.

## **Stillbirths**

A child is referred to as stillborn if it does not show any sign of life at birth and it weighs at least 500 g or if the gestation lasted at least 22 full weeks (24 weeks up to 31.12.2004).

## **Further information**

[www.health-stat.admin.ch](http://www.health-stat.admin.ch)

(with file providing data from the graphs)

#### **Online**

[www.statistics.admin.ch](http://www.statistics.admin.ch)

#### **Print**

[www.statistics.admin.ch](http://www.statistics.admin.ch)

Federal Statistical Office

CH-2010 Neuchâtel

[order@bfs.admin.ch](mailto:order@bfs.admin.ch)

tel. +41 58 463 60 60

#### **FSO number**

1543-2000

---

**Statistics  
counts for you.**

[www.statistics-counts.ch](http://www.statistics-counts.ch)