

Figures from 2019 unless another year is specified



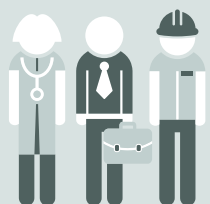
## 45%

of jobs in the 5 largest agglomerations  
(Basel, Bern, Geneva, Lausanne,  
Zurich), 2017



## 4.1%

Social assistance rate in the urban area  
twice as high as in rural area, 2018



## 51%

of active population with  
a tertiary-level degree in an urban,  
39% in a rural area

Unemployment rate  
in the agglomerations



Geneva 3.7%

Lausanne 3.6%

Other agglomerations or cores 2.4%

Basel 2.3%

**Switzerland 2.3%**

Zurich 2.2%

Bern 1.9%

No agglomerations or cores 1.7%

Average distance to nearest service, 2015

Transport stops (2017)



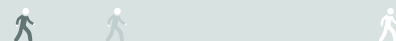
Compulsory schools



Grocery shops



Doctors' practices



0 0.5 1.0 1.5 2.0 2.5 km



Urban



Intermediate



Rural