

Gross domestic product (GDP)

**CHF 689 545 m**

At current prices, provisional

**CHF 80 986** per inhabitant

**+2.8%**

Change over previous year,  
at prices of preceding year, provisional

**CHF 691 417 m**

Gross national income (GNI)

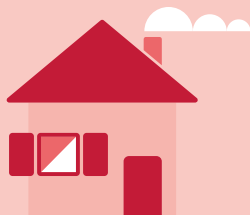
at current prices, provisional

**CHF 367 250 m**

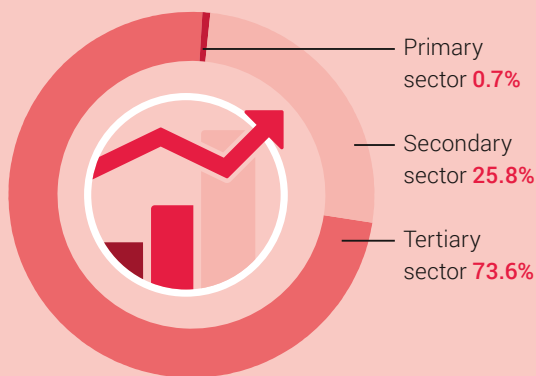
Consumption expenditure

at current prices,  
provisional

**CHF 43 133** per inhabitant



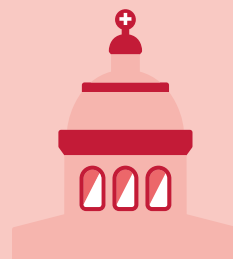
Structure of the Swiss economy  
as a % of the GDP, by economic sectors



**21.3%**

Savings rate of private households

as a % of the gross disposable income incl. the 2nd pillar



**+1.4%**

Surplus (+)/deficit (-)  
of general government  
in relation to the GDP