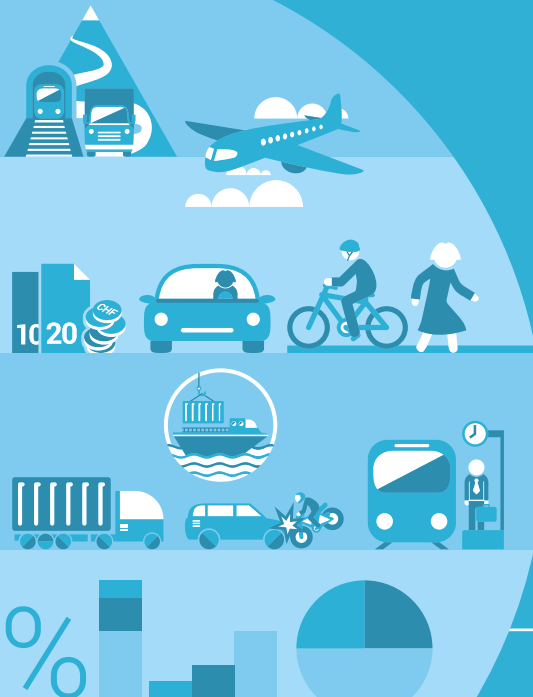


2020



11

Mobility and
transport

Neuchâtel 2020

Mobility and Transport

Pocket Statistics 2020



Schweizerische Eidgenossenschaft
Confédération suisse
Confederazione Svizzera
Confederaziun svizra

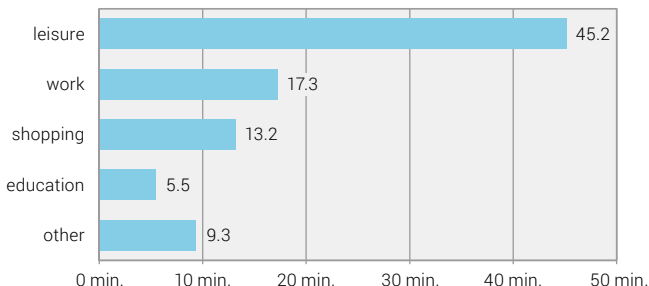
Swiss Confederation

Federal Department of Home Affairs FDHA
Federal Statistical Office FSO

The Swiss population spends 90 minutes in transport every day



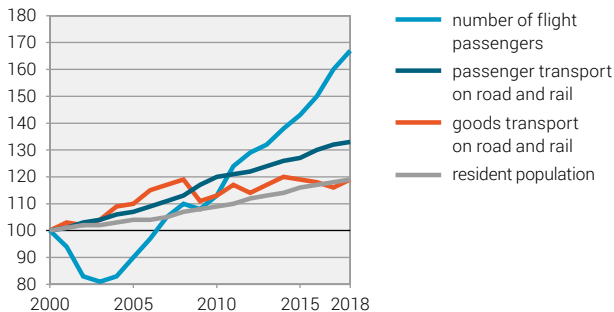
This includes 8 minutes of waiting and transfer time.
Leisure is by far the main trip purpose.



Note: status in 2015, only distances in Switzerland, base = resident population aged 6 or over

Passenger transport is growing faster than the population

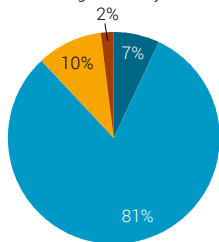
Evolution index, 2000=100



Note: base passenger transport = person-km, base goods transport = tonne-km

Transport infrastructure covers an area the size of the canton of Thurgau

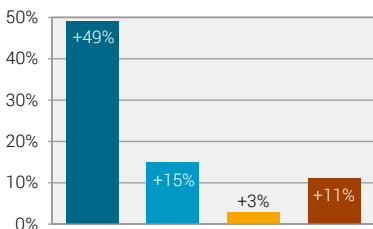
Transportation area
according to survey 2004/09



Total: 952 km²

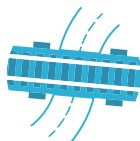


Increase
since survey 1979/85



Length of roads and rails

National highways	1 859 km	2018
Cantonal roads	17 816 km	2018
Railway network	5 196 km	2015



Number of public transport stations and stops

Railway	1 735	2015
Bus and tram	21 846	2015



Number of airports

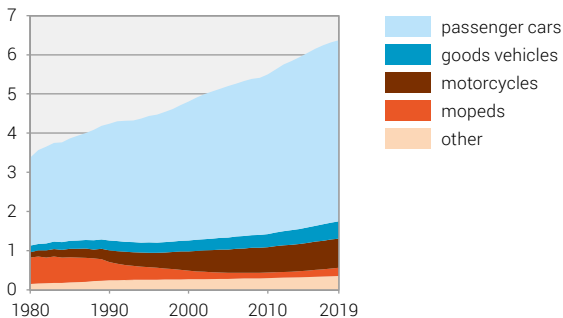
National airports	3	2018
Regional airports	11	2018
Airfields	44	2018



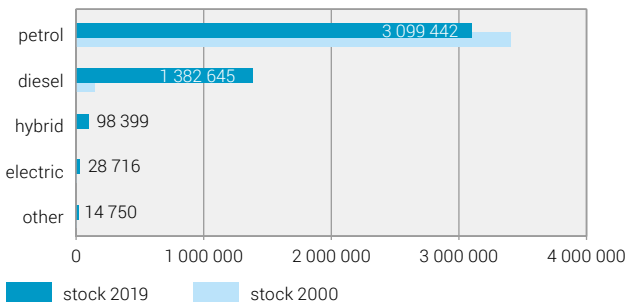
There are more than 6 million motor vehicles on Swiss roads

4.6 million of these are cars – twice as many as there were in 1980. 65% of households have a bicycle, 7% an e-bike (in 2015).

Million motor vehicles

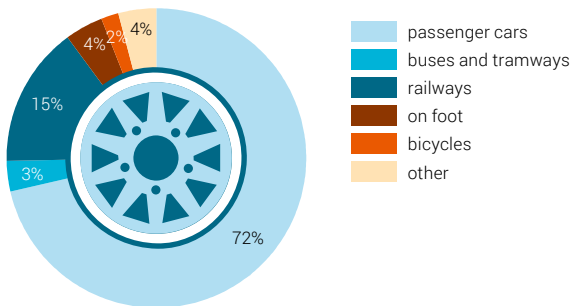


Passenger cars: electric cars gain momentum but their number remains low



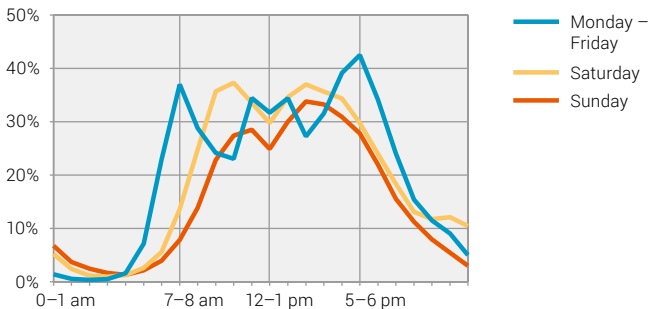
Cars dominate passenger transport

Shares of means of transport in the person-kilometres covered
(by road and rail, 2018)



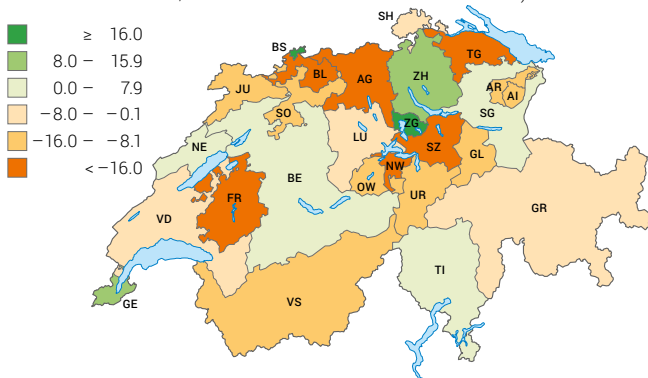
Transport reaches its peak during the week between 5 and 6 pm

Share of the population on the move; 2015 (in Switzerland)



Basel-Stadt and Zug are particularly attractive to commuters

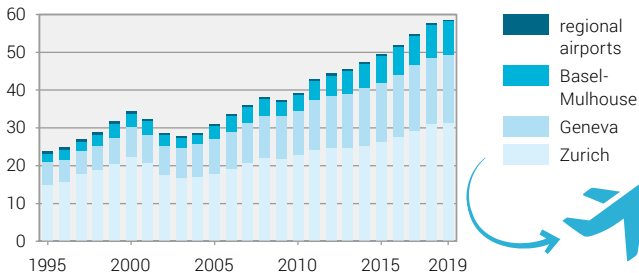
Relative commuter balance of cantons, 2017 (inbound commuters minus outbound commuters, as a % of commuters resident in the canton)



Note: excluding cross-border commuters heading/from abroad

The number of air passengers more than doubled between 2004 and 2019

Millions of arriving and departing passengers

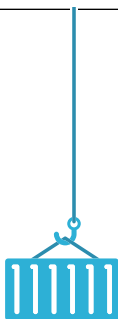
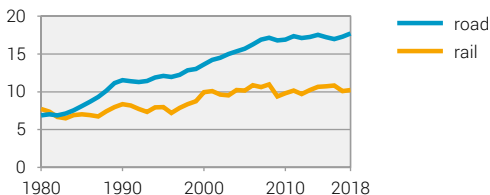


Goods transport almost doubled between 1980 and 2018

63% of transport performance is by road, 37% by rail.

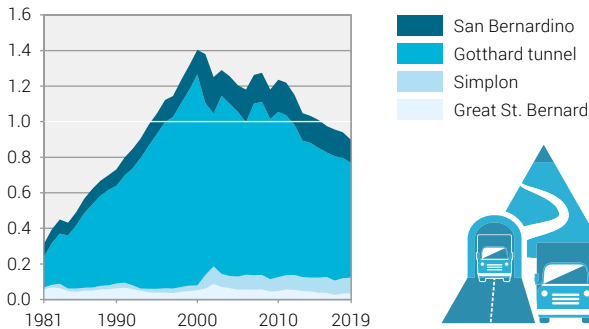
Domestic transport dominates road transport (64% of tonne-kilometres), and transit trips dominate rail transport (63%).

Billion tonne-kilometres



Since 2001, fewer and fewer lorries have travelled through the Swiss Alps

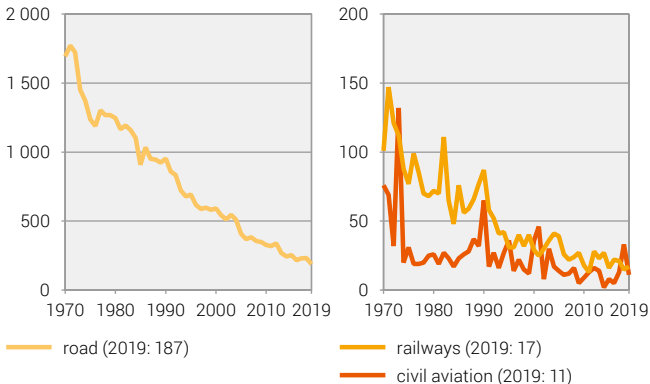
Number of transalpine trips by heavy goods vehicles
Million





The number of deaths in traffic has fallen considerably



Fatally injured persons



Mobility is responsible for more than a third of energy consumption and CO₂ emissions

Energy consumption by transport, 2018		314 petajoules
Change from 2000		+4%
Share in the total energy consumption		38%
CO₂ emissions from transport, 2018		14.8 m tonnes
Change from 2000		-6%
Share in the total emissions		40%
Persons affected by noise from roads, 2015		13%

Note: CO₂ emissions without international aviation; noise from roads during the day, measured against the thresholds of the noise abatement ordinance

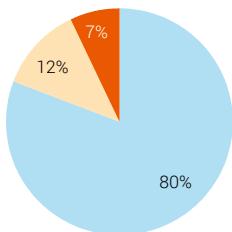


Transport costs CHF 90 billion

77% of costs are generated by passenger transport, 23% by goods transport.

Between 2010 and 2016, costs increased by 4%.

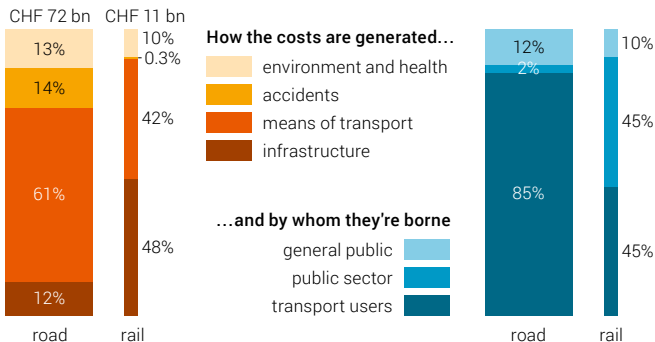
Costs of transport, 2016



- road transport (CHF 72.3 billion)
- rail transport (CHF 11.2 billion)
- air transport (CHF 6.2 billion)

Note: without inland waterways, road transport without pedestrian traffic and bicycles, air transport without general aviation

Transport users do not bear all costs themselves



Note: status in 2016, road transport without pedestrian traffic and bicycles

Sources: FSO – AREA, GTS, CFT, TP, PEND, PV-L, STATPOP; FSO, ARE – MTMC; FEDRO, FSO – MFZ, SVU; FSO, FOCA – AVIA_LC, AVIA_ZL ; FEDRO – Length of Swiss motorway network ; FOEN–GIS Noise database of Switzerland sonBase, Greenhouse gas inventory; FOT – New occurrence database; FOT, FEDRO – Transalpine goods transport; SFOE – Overall energy statistics; STSB – Aviation accident statistics

Further information: www.statistics.admin.ch → Look for statistics →
11 – Mobility and transport

Published by:	Federal Statistical Office (FSO)
Information:	MOBIL Section, tel. +41 58 463 64 68, verkehr@bfs.admin.ch
Editor:	MOBIL Section
Series:	Swiss Statistics
Topic:	11 Mobility and transport
Original text:	French
Translation:	FSO language services
Layout:	DIAM Section, Prepress/Print
Graphics:	DIAM Section, Prepress/Print
Map:	DIAM Section, ThemaKart
Icons:	DIAM Section, Prepress/Print
Online:	www.statistics.admin.ch
Print:	www.statistics.admin.ch Federal Statistical Office, CH-2010 Neuchâtel, order@bfs.admin.ch , tel. +41 58 463 60 60 Printed in Switzerland
Copyright:	FSO, Neuchâtel 2020 Reproduction with mention of source authorised (except for commercial purposes).
FSO number:	839-2000