

Figures from 2018 unless another year is specified



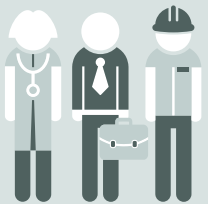
45%

of jobs in the 5 largest agglomerations (Basel, Bern, Geneva, Lausanne, Zurich), 2017



4.1%

Social assistance rate in the urban area twice as high as in rural area



49%

of active population with a tertiary-level degree in an urban, 39% in a rural area

Unemployment rate in the agglomerations



Geneva 4.3%

Lausanne 4.0%

Zurich 2.7%

Basel 2.7%

Other agglomerations or cores 2.6%

Switzerland 2.6%

Bern 2.1%

No agglomerations or cores 1.9%

Average distance to nearest service, 2015

