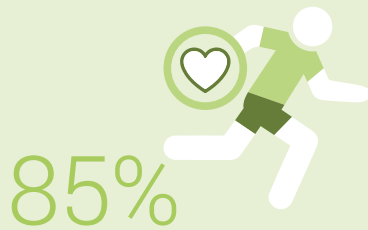


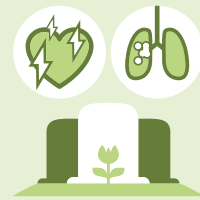
Figures from 2017 unless another year is specified



Share of the population in good health

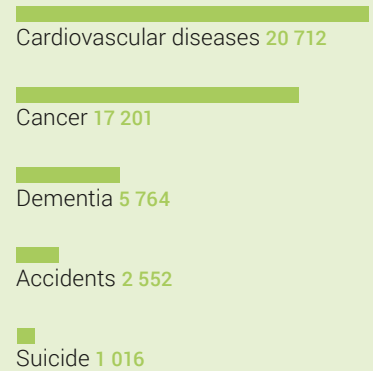


Share of the population that is obese



64 964

Deaths in 2016, of which:



259 421

Full-time equivalents, jobs in hospitals and nursing homes



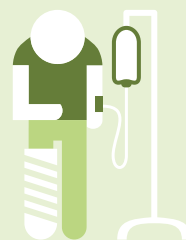
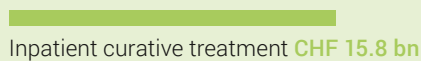
4.3

Doctors per 1000 inhabitants

CHF 80.5 bn

(12.2% of the GDP)

Health expenditure 2016, of which:



12%

Share of the hospitalised population



16%

Share of the population aged 80 and over in nursing homes
(72% of residents aged ≥ 80 years are women)