



21

Sustainable Development, regional and international Disparities

737-1200

Sustainable Development

Pocket Statistics 2012



Schweizerische Eidgenossenschaft
Confédération suisse
Confederazione Svizzera
Confederaziun svizra

Swiss Confederation

Federal Statistical Office FSO
Federal Office for Spatial Development ARE
Swiss Agency for Development and Cooperation SDC
Federal Office for the Environment FOEN

Neuchâtel, 2012

The **Pocket Statistics 2012** shows by means of a series of indicators where Switzerland finds itself on the path towards sustainable development. The indicators stem from the system of indicators to monitor sustainable development in Switzerland (**MONET**).

Each indicator is accompanied by a statement about a development. Each development is qualified by means of one of the following symbols to signal progress towards the goals of sustainable development:

- ✓ Positive – moving towards sustainability
- ≈ No significant change
- ✘ Negative – moving away from sustainability

The development is analysed since 1992 (United Nations Earth Conference on Environment and Development) or since the first survey (if after 1992). The start of the analysed period is marked with a ▲ in the graphics if it does not coincide with the beginning of the period shown. Detailed explanations are available at www.monet.admin.ch.

Rio+20

2012 will be the 20th anniversary of the first UN Earth Conference on Environment and Development, which was held in 1992 in Rio de Janeiro. The political framework for the implementation of a sustainable development policy was prepared and the Agenda 21 was adopted at the time. In 2012, another conference on sustainable development will be held in Rio de Janeiro (“Rio+20”). The key topics are “green economy in the context of sustainable development and poverty eradication” and “institutional framework for sustainable development”.

Contents

| | |
|--|-----------|
| What is sustainable development? | 4 |
| Living conditions | 6 |
| Health | 9 |
| Social cohesion | 11 |
| International cooperation | 14 |
| Education and culture | 17 |
| Research and technology | 20 |
| Work | 22 |
| Economic system | 24 |
| Production and consumption | 27 |
| Mobility and transport | 30 |
| Energy and climate | 33 |
| Natural resources | 36 |
| Switzerland's sustainable development at a glance | 40 |
| Additional information | 42 |

What is sustainable development?

Sustainable development is a development that meets the needs of the present without compromising the ability of future generations to meet their own needs. This is the WCED's (United Nation's World Commission on Environment and Development, known as "Brundtland Commission") definition of sustainable development from 1987. The Brundtland report adds two elements to this definition which are considered to be fundamental: prioritising the basic needs of individuals (especially the most disadvantaged) and taking due account of the capacity limits of our environment.

In 1992, the Earth Summit in Rio de Janeiro provided the basis for implementing a sustainable development policy by proposing Agenda 21 (Action Plan for the 21st Century). Switzerland adopted this plan of action. Sustainable development is also enshrined in the Federal Constitution of 1999 (Arts. 2 and 73).

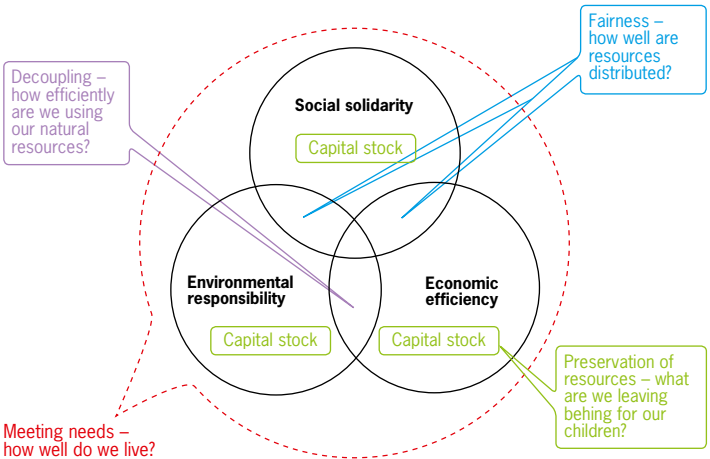
The three traditional pillars of sustainable development (society, the environment and the economy), which have been widely applied since the Earth Summit of 1992, have been reformulated in Swiss federal government policy as three qualitative objectives:

- social solidarity;
- environmental responsibility;
- economic efficiency.

These objectives are interconnected and can be represented by three intersecting circles. The intersections of these circles symbolise the necessity of balancing these three objectives, which are sometimes in conflict with one another.

The following diagram represents the challenge of sustainable development:

- to take into account the quality of life of present generations (**meeting needs**),
- preserve resources for future generations (**capital stock**),
- equity requirements (**interfaces between the objective of social solidarity and the two other objectives**),
- the need to use resources in a rational way (**interface between the objective of environmental responsibility with that of economic efficiency**).



The system of indicators to monitor sustainable development (MONET) includes indicators that cover these challenges. The following pages show these indicators divided into twelve main themes of sustainable development.

Living conditions

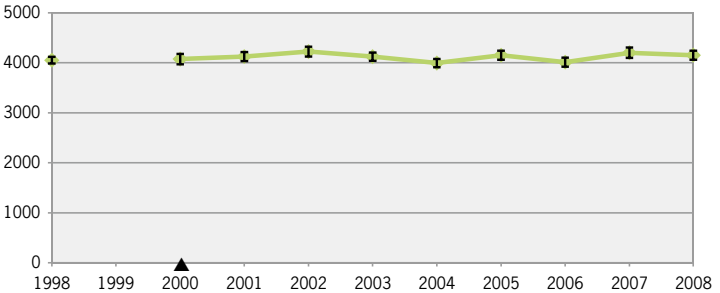
One of the principles of sustainable development states that every member of society has the right to a life that is fit for human beings. This includes meeting basic needs such as security, housing and food, and above and beyond these basic needs, having an appropriate scope for the satisfaction of material and non-material requirements (such as satisfaction and happiness in life).

The income remains at the same level

≈

Disposable income

Mean equivalent disposable income in Swiss francs at 2008 prices



Source: Federal Statistical Office, Household Budget Survey

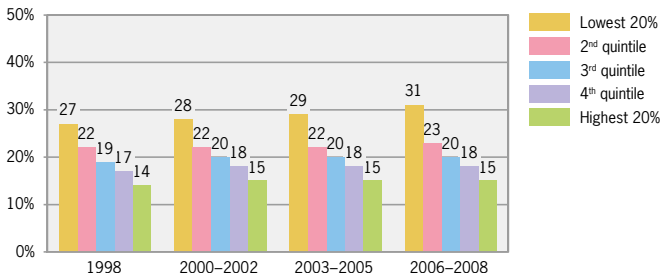
© FSO

People on low incomes have to spend proportionately more and more on housing



Housing costs

Share of housing costs (including incidental expenses) in the disposable income of households, by income group, median of percentage share



Source: Federal Statistical Office

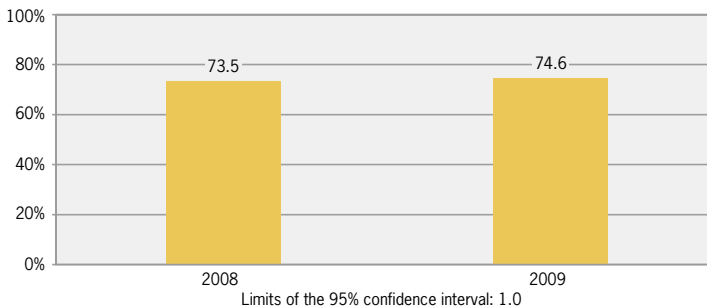
© FSO

The share of persons with a high degree of satisfaction remains at the same level



Life satisfaction

Share of the population aged 16 and over with a high degree of satisfaction



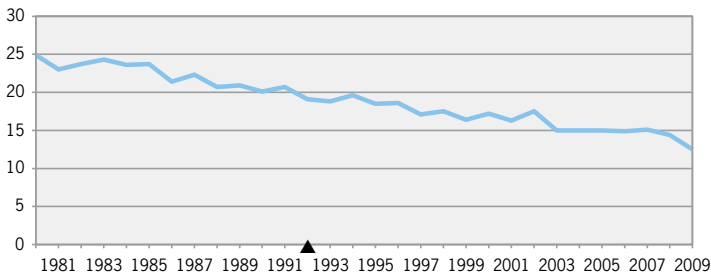
Source: Federal Statistical Office

© FSO

The suicide rate has decreased in the past 20 years ✓

Suicide rate

Suicides per 100'000 inhabitants



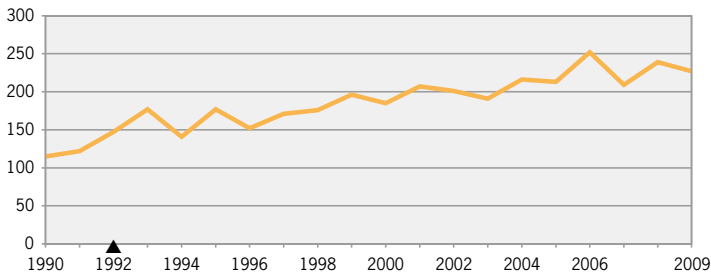
Source: Federal Statistical Office

© FSO

The number of convictions for violent offences is increasing ✕

Violent offences

Convictions for completed offences (homicide, rape, grievous bodily harm, violent robbery and hostage-taking)



Source: Federal Statistical Office

© FSO

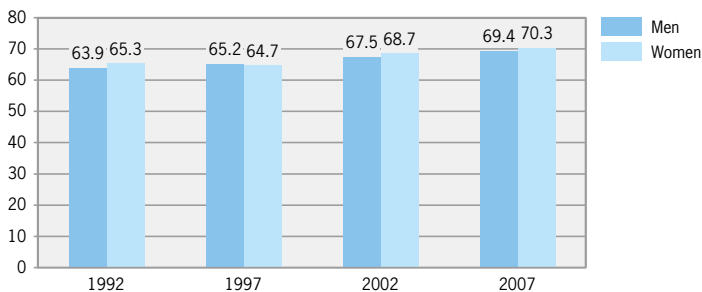
Health

People's state of health has a major influence on their quality of life, and it is an important factor as regards economic efficiency. This is why the protection and promotion of health are accorded high priority in sustainable development. Both physical and mental health are significant in this context.

Life expectancy in good health is rising among men and women ✓

Life expectancy in good health

Life expectancy at birth in years



Source: Federal Statistical Office

© FSO

Other indicators on the theme of health are available online:

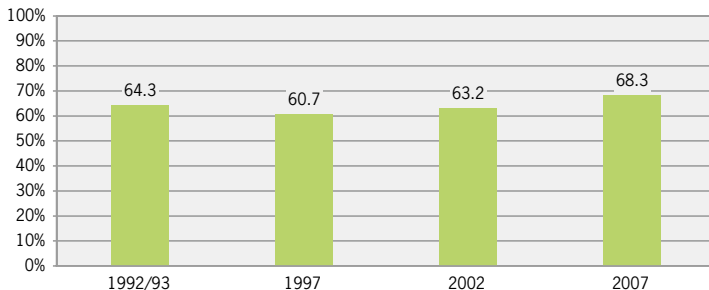
The **mental well-being** of the population is improving ✓

Health expenditures in proportion to gross domestic product (GDP) ✗ are rising

The share of persons who do physical exercise at least once per week to the point of working up a sweat is increasing ✓

Health-relevant behaviour: physical exercise

Share of persons who do physical exercise at least once per week to the point of working up a sweat



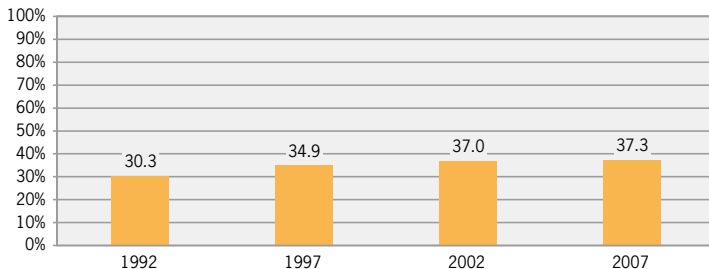
Source: Federal Statistical Office

© FSO

A growing number of people are overweight ✕

Overweight

Share of the population aged 15 and over who are overweight (BMI of 25 or more)



Source: Federal Statistical Office

© FSO

Social cohesion

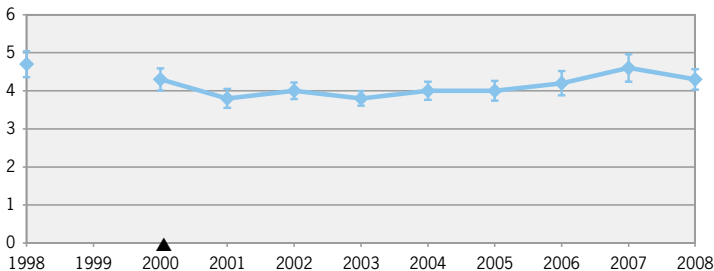
Acting in solidarity is a fundamental requirement if a society is to be capable of functioning and surviving. For this reason, sustainable development places special emphasis on promoting social cohesion and on the participation of all social groups and regions in economic, political and social life. The principle of “equal rights and equal opportunities” is a key factor here.

Unequal income distribution persists



Inequality of income distribution

Ratio of the average equivalised disposable income of the richest 20% of the population to the corresponding average of the poorest 20% of the population



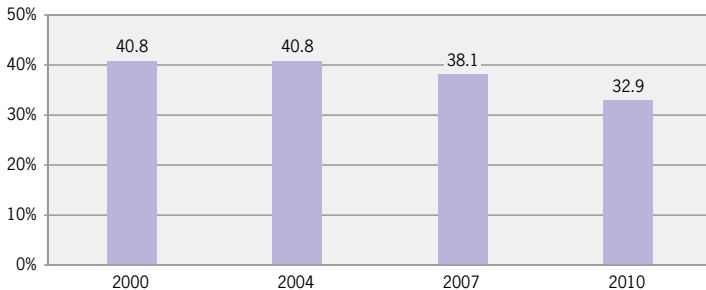
Source: Federal Statistical Office, Household Budget Survey

© FSO

The share of persons who do voluntary work is decreasing ✖

Voluntary work

Share of persons who do voluntary work in the resident population aged 15 and over



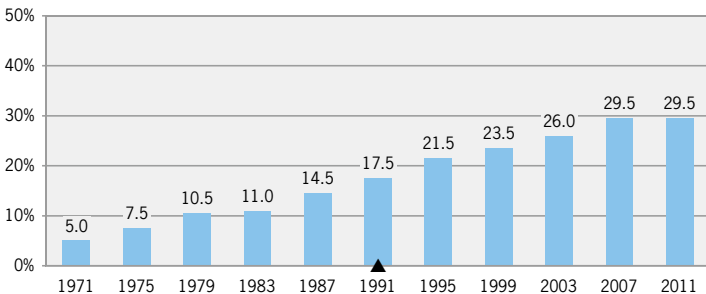
Source: Federal Statistical Office

© FSO

The share of women in the National Council has increased ✔

Women in the National Council

Share of women as a percentage of all elected National Councillors



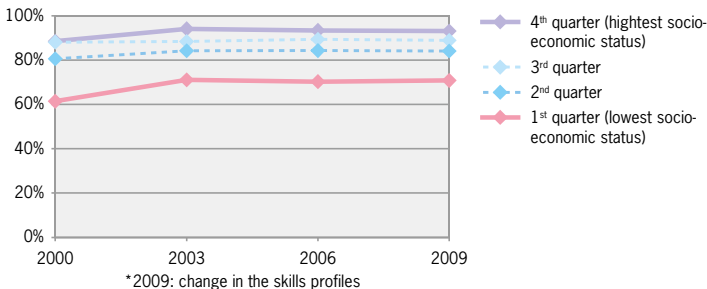
Source: Federal Statistical Office

© FSO

The gap in the reading skills between young people from different socio-economic backgrounds is decreasing ✓

Reading skills of 15-year-olds by socio-economic background

Share of 15-year-olds who attain reading skill level 2 (on a scale of <1 to 6*), by socio-economic conditions of the parental home



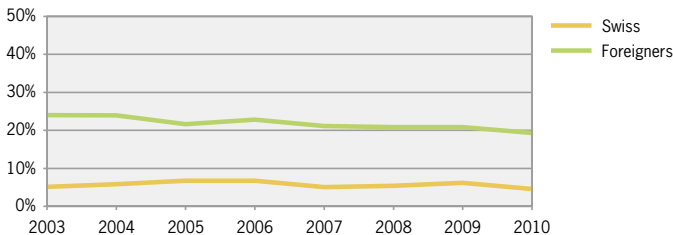
Sources: Federal Statistical Office; Consortium PISA.ch

© FSO

The share of 18–24-year-olds of foreign origin who do not complete an education or training programme after compulsory education is decreasing ✓

Early school leavers by citizenship

Share of 18–24-year-olds who are no longer in an educational programme and who have at most a compulsory school qualification



Source: Federal Statistical Office

© FSO

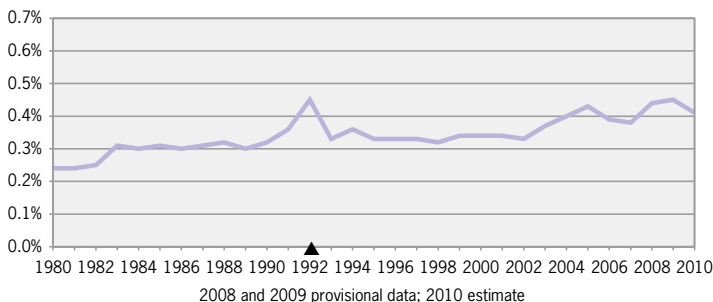
International cooperation

The global fight against poverty and a just distribution of the use of global resources are central aims of sustainable development. All members of the world community should participate in solving global problems. World trade should be commensurate with social justice and with the careful management of environmental resources and should not detract from the satisfaction of the needs of populations in other countries. The peaceful coexistence of peoples and nations and respect for human rights should be promoted.

The rate of official development assistance is on an upward trend ✓

Official Development Assistance

ODA in proportion to Gross National Income (previously Gross National Product)



Sources: Swiss Agency for Development and Cooperation; State Secretariat for Economic Affairs

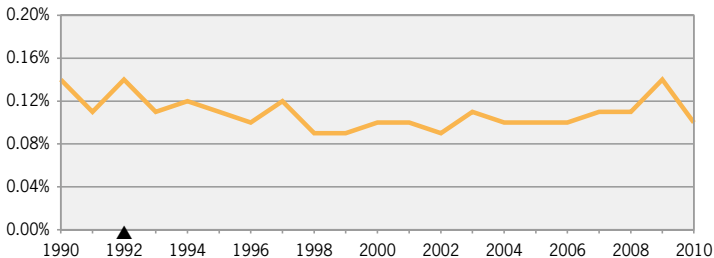
© FSO

The share of official development assistance to least developed countries in gross national income is fluctuating



Official Development Assistance to least developed countries

Swiss' Official development assistance to least developed countries (LDC) as percentage of gross national income



Source: Swiss Agency for Development and Cooperation

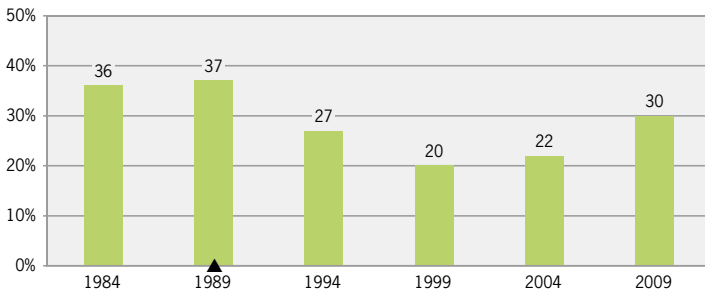
© FSO

The share of persons who want an increase in development assistance is increasing again after a decline



Attitude towards development assistance

Share of persons eligible to vote who would like to increase official development assistance



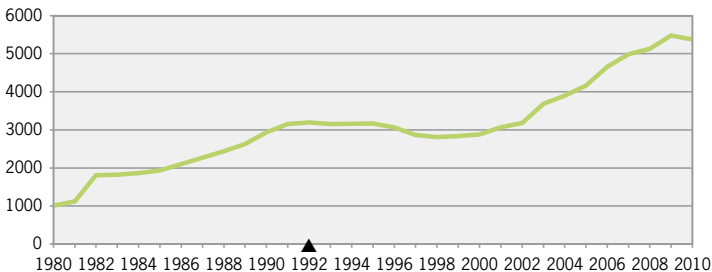
Source: gfs.berne

© FSO

Remittances by migrants to their countries of origin are increasing ✓

Remittances by migrants

Total of official private remittances from migrant workers in Switzerland to their countries of origin, in CHF million



Source: World Bank

© FSO

Other indicators on the theme of international cooperation are available online:

The share of concluded **multilateral treaties** that are coming into force is stagnating ≈

The share of goods that can be **imported free of customs duties from the least developed countries** is increasing ✓

The level of Switzerland's **direct investments in developing countries** is rising ✓

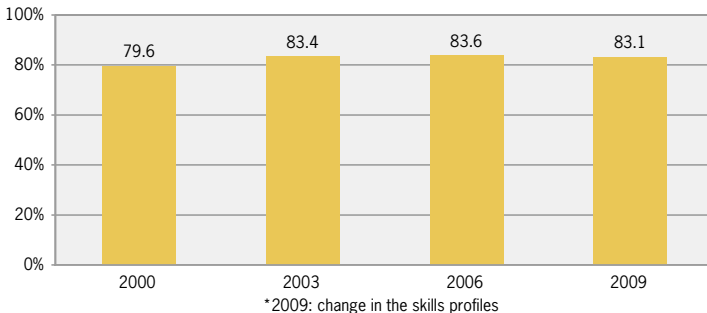
Education and culture

Sustainable development should maintain and develop human capital. Everyone ought to be given access to an adequate basic education as well as continuing education. Access to information, e.g. through the internet, and the use of such information is of central importance for social integration and the exercise of political rights. Sustainable development also includes guaranteeing cultural diversity and maintaining the socio-cultural heritage.

The share of young people who are capable of basic reading tasks is increasing ✓

Reading skills of 15-year-olds

Share of 15-year-olds reaching at least reading skills level 2 (scale < 1 to 6*)



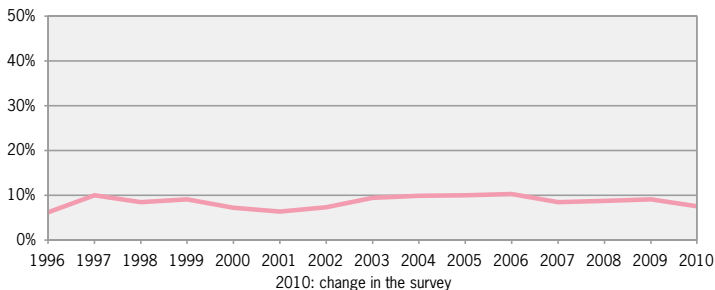
Sources: Federal Statistical Office; Consortium PISA.ch

© FSO

It has not yet been possible to reduce the share of 18–24-year-olds without a post-compulsory education to 5%, which is the target set for 2020 ✕

Early school leavers

Share of 18–24-year-olds who are no longer in an educational programme and who have at most a compulsory school qualification



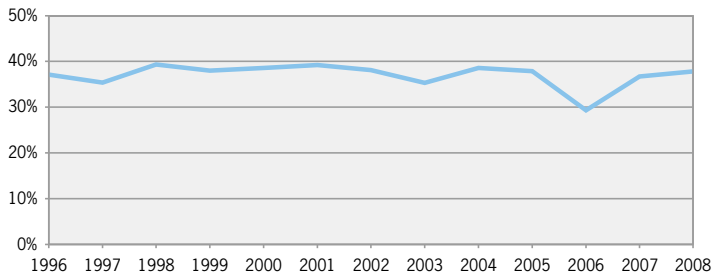
Source: Federal Statistical Office

© FSO

The participation on further education courses is relatively stable since 1996 ≈

Participation in further education

Share of 20–74-olds who attend further education courses



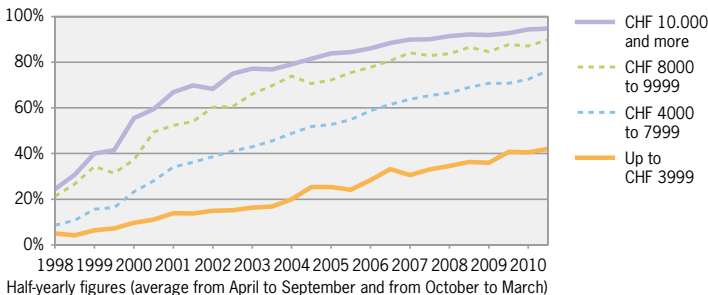
Source: Federal Statistical Office

© FSO

After an initial sharp increase, the difference in internet use between persons with low income and persons with high income is narrowing ×

Internet use by income group

Share of persons in the population aged 14 and over who use the internet several times per week, by monthly income



Sources: MA-Net; Net-Matrix-Base

© FSO

Other indicators on the theme of education and culture are available online:

The share of the population who use at least **two national languages** ≈ in their daily life remains about the same

Participation in cultural activities 1 value

Own cultural activities 1 value

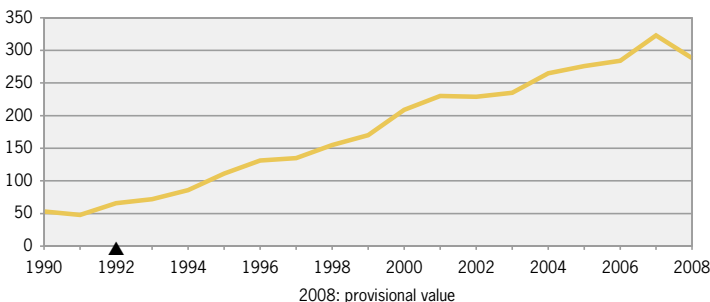
Research and technology

Research, development and technology are regarded as important motors for a society's innovative activity and competitiveness. It follows that they are important conditions for the maintenance of economic efficiency. The preservation and improvement of productive and human capital promote sustainable development.

The number of patent applications is rising ✓

Patent applications

Applications filed under the PCT (Patent Co-operation Treaty) by persons resident in Switzerland, per million inhabitants



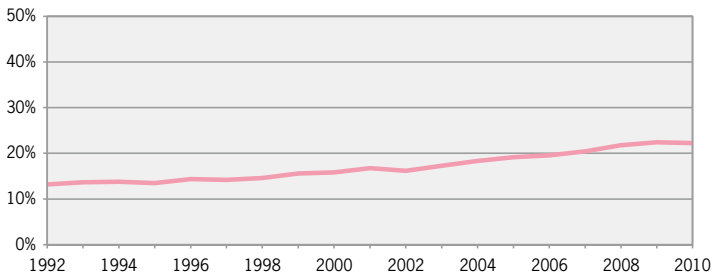
Source: Organisation for Economic Cooperation and Development (OECD)

© FSO

The number of persons employed in science and technology is rising ✓

Human resources in science and technology

Share of persons educated and active in science and technology in relation to total working population



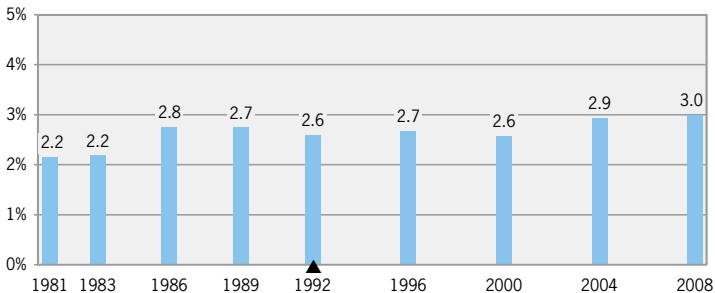
Source: Federal Statistical Office

© FSO

Expenditure on research and development is rising ✓

Expenditure on Research and Development

Share in gross domestic product



Source: Federal Statistical Office

© FSO

Work

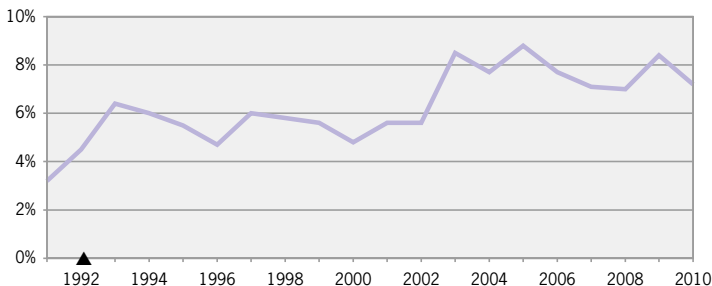
As part of sustainable development, people who want to be gainfully employed should be able to find reasonable work from which they can support themselves. Also, an adequate supply of labour is a requirement for an economy that is able to perform efficiently. Everyone should have equal opportunities on the labour market and disadvantaged groups should be integrated.

The share of unemployed young people is increasing



Youth unemployment

Share of unemployed in the 15–24-year-old economically active population



Source: Federal Statistical Office

© FSO

Other indicators on the theme of work are available online:

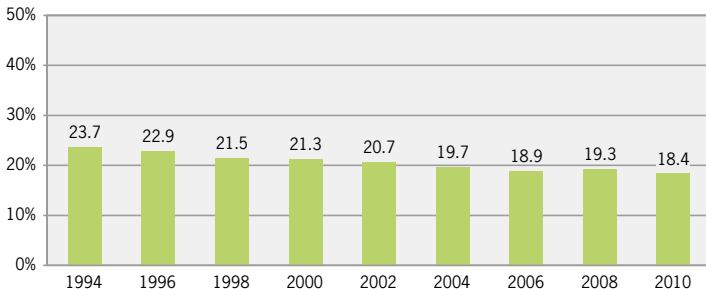
The **unemployment rate** is rising



The wages of women and men are equalising ✓

Wage gap between men and women

Wage gap between men and women as a percentage of men's monthly gross wage



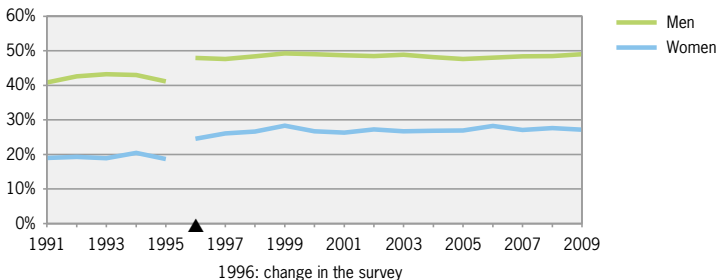
Source: Federal Statistical Office

© FSO

The difference between the share of women and the share of men in managerial positions is narrowing slightly ✓

Professional position by gender

Share of all employees accounted for by men and women in managerial positions



Source: Federal Statistical Office

© FSO

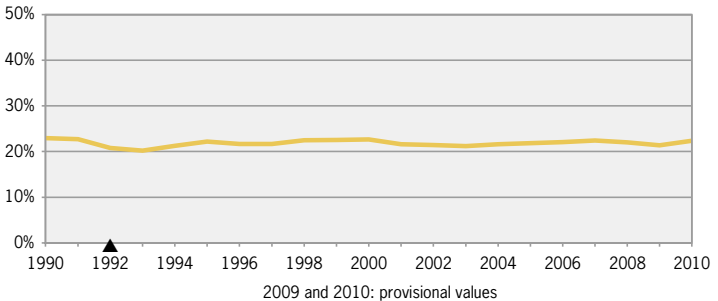
Economic system

To ensure that the population's basic requirements are met in the long term, an economy that is capable of performing efficiently is needed. This also entails promoting innovation and competitiveness. When the market mechanism fails, the state should primarily intervene with market instruments. Sustainable development also requires that public-sector debt be incurred only to the extent that it does not jeopardise the capability of future generations to meet individual and social needs or make investments.

The share of investment in GDP is increasing ✓

Investment to GDP ratio

Gross investments in relation to gross domestic product



Source: Federal Statistical Office

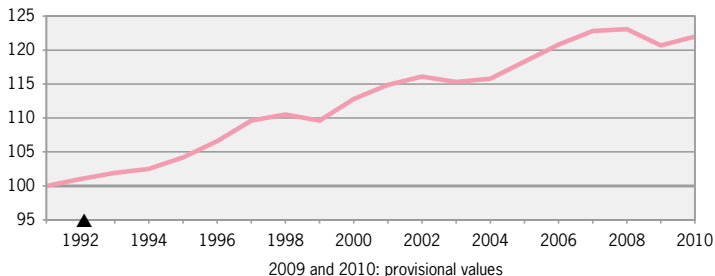
© FSO

The productivity of labour is increasing



Labour productivity

Productivity trend by hours worked, index 1991=100



Source: Federal Statistical Office

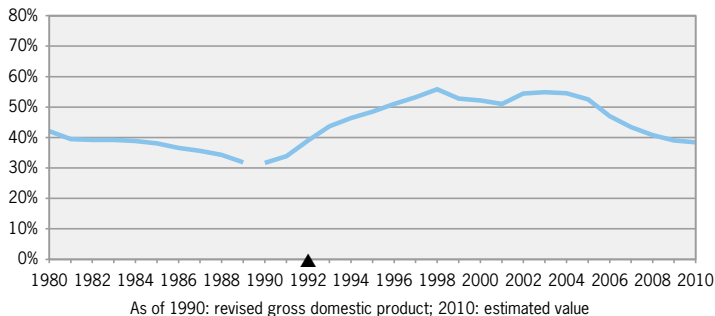
© FSO

Indebtedness increased until the end of the 1990s
and has been decreasing again since 2003



Level of public debt

Gross debt of Confederation, cantons and municipalities (without social insurances)
in relation to gross domestic product

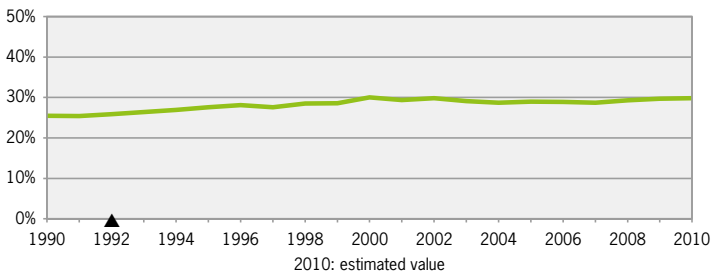


Source: Federal Finance Administration

© FSO

Public sector fiscal revenue rate

Revenues from taxes and compulsory social security contributions in proportion to gross domestic product



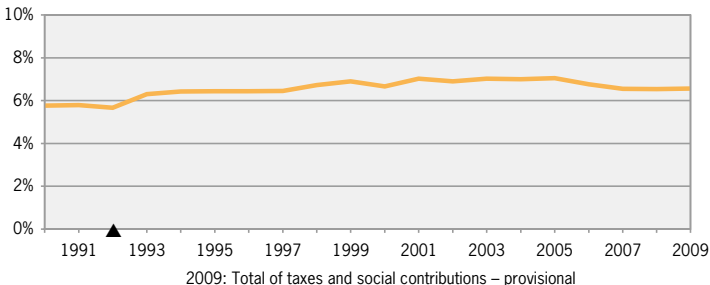
Source: Federal Finance Administration

© FSO

Revenues from environmental-related taxes are increasing

Environment-related taxes

In proportion to total revenues from taxes and social contributions¹



¹ According to ESA95 – European System of Accounts 95

Source: Federal Statistical Office

© FSO

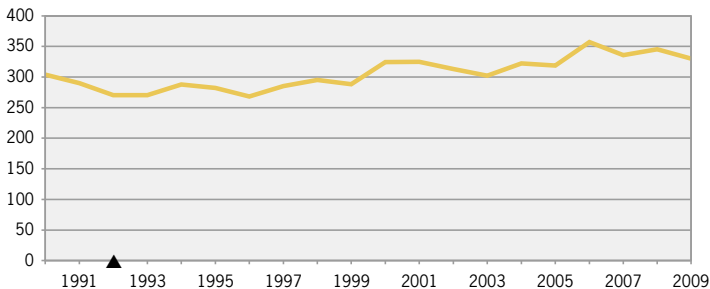
Production and consumption

Sustainable production and consumption patterns should be as environmentally compatible and socially just as possible. This includes efficient use of resources and whenever possible the avoidance of waste production.

The total material requirement is increasing x

Total material requirement

In million tonnes



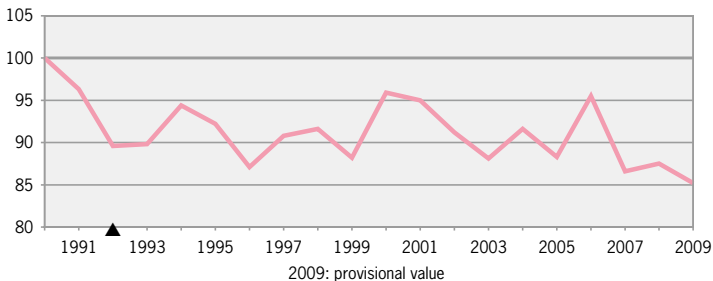
Source: Federal Statistical Office

© FSO

The total material requirement is decreasing in proportion to economic value added ✓

Material intensity

Total Material Requirement (TMR) to gross domestic product ratio, index 1990=100



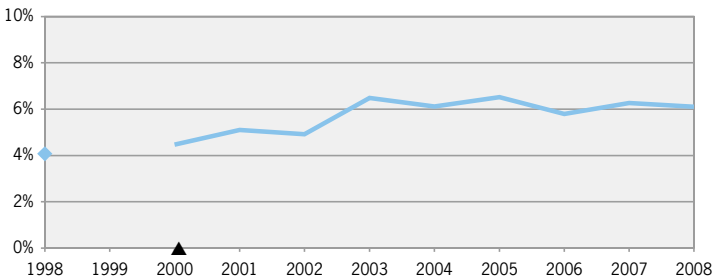
Source: Federal Statistical Office

© FSO

Swiss consumers are increasingly buying organic products ✓

Consumption of organic products

Share of spending on organic products in total household expenditure on food and drinks

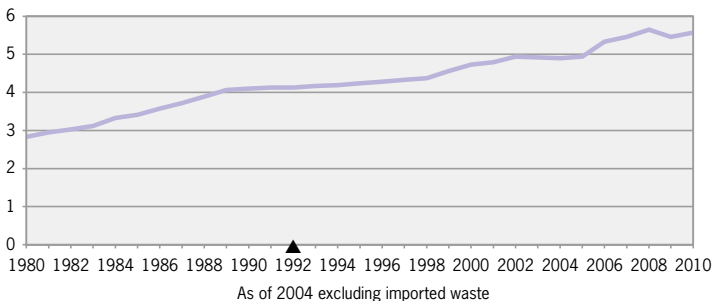


Source: Federal Statistical Office

© FSO

Municipal Waste

Total municipal waste produced including recycling, in millions of tonnes



Source: Federal Office for the Environment

© FSO

Other indicators on the theme of production and consumption are available online:

The **transfer of material requirement abroad** is increasing

x

The sale of **fair trade** coffee fluctuates

≈

The share of waste that flows into a **recycling** process is increasing

✓

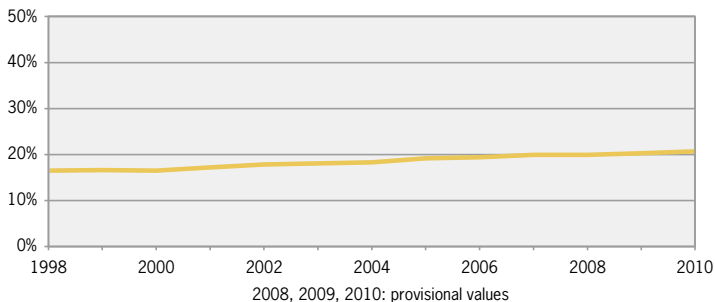
Mobility and transport

A sustainable transport system guarantees all groups of the population and all parts of the country access to mobility. It makes possible an efficient functioning of the economy and maintains environmental pollution and the use of non-renewable resources at a minimum level.

The share of public transport in total rail and road passenger travel is increasing ✓

Modal split in passenger transport

Share of public transport in total passenger transport by road and rail, in % of passenger km



Source: Federal Statistical Office

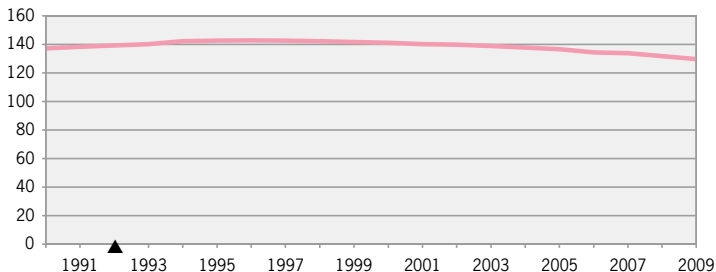
© FSO

Less CO₂ is emitted per kilometre travelled



CO₂ intensity of motorised individual traffic

CO₂ emissions in relation to traffic performance, in grams/person-kilometers



Source: Federal Office for the Environment; Federal Statistical Office

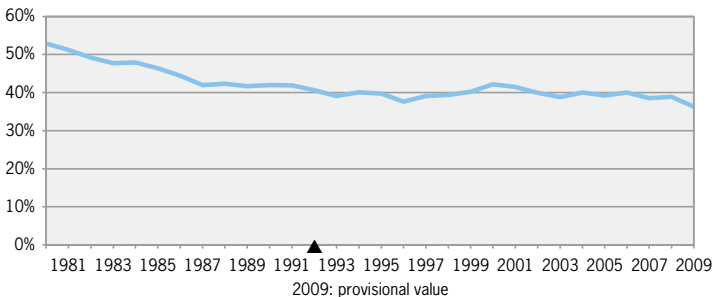
© FSO

The share of rail freight transport is decreasing



Modal split in freight transport

Share of rail freight transport in total rail and road transport, as percentage of tonne-kilometres



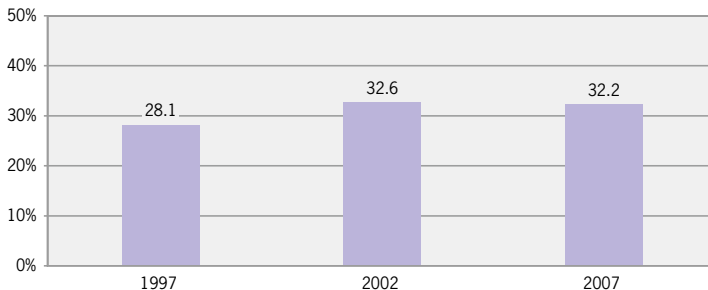
2009: provisional value

Source: Federal Statistical Office

© FSO

Persons affected by noise

Share of the population who report that they are regularly disturbed by traffic noise at home (car, train and aircraft noise)



Source: Federal Statistical Office

© FSO

Other indicators on the theme of mobility and transport are available online:

The **energy consumption in transport** remains stable

≈

Freight transport intensity is increasing, i.e. freight transport is growing faster than the economy

x

The number of **take-offs and landings** increased particularly sharply up to the year 2000

x

Energy and climate

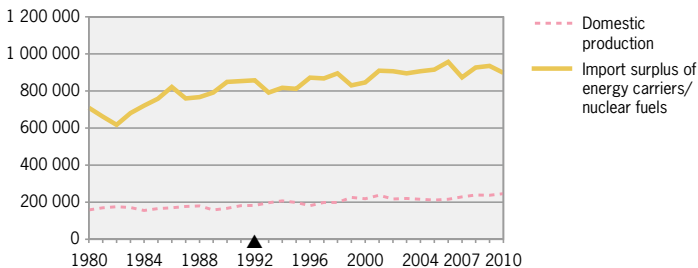
For the supply of energy to be consistent with the goals of sustainable development, the level of use of non-renewable resources should be kept below that of the development potential of renewable sources. Sustainable development also requires the prevention of severe or irreversible environmental damage. Therefore, the emission of greenhouse gases should be avoided whenever possible.

Energy imports are increasing

x

Energy dependency

Domestic production of primary energy carriers and gross energy imports (import surplus of energy/nuclear fuels), in terajoules



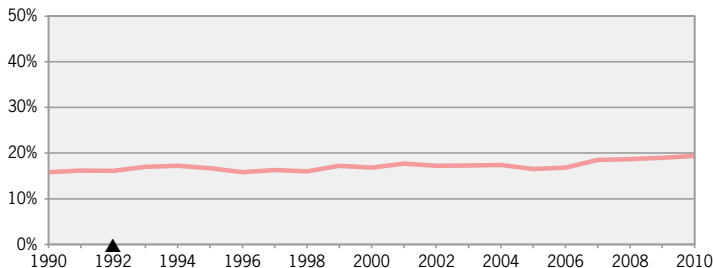
Source: Federal Office of Energy

© FSO

The share of renewable energies in final energy consumption is increasing ✓

Renewable energies

Share in final energy consumption



Source: Federal Office of Energy

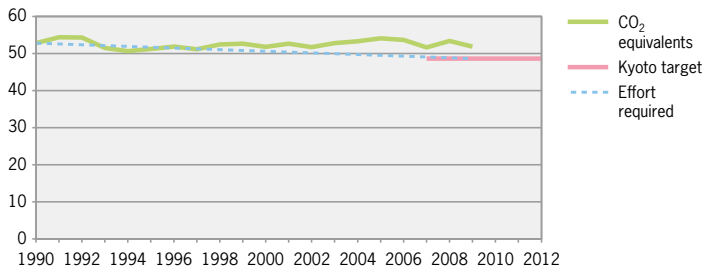
© FSO

It has not yet been possible to reduce greenhouse gas emissions to ≈ the target value of the Kyoto Protocol

Greenhouse gas emissions

Movement towards target value of Kyoto Protocol for 2008–2012

CO₂ equivalents, in million tonnes



Source: Federal Office for the Environment

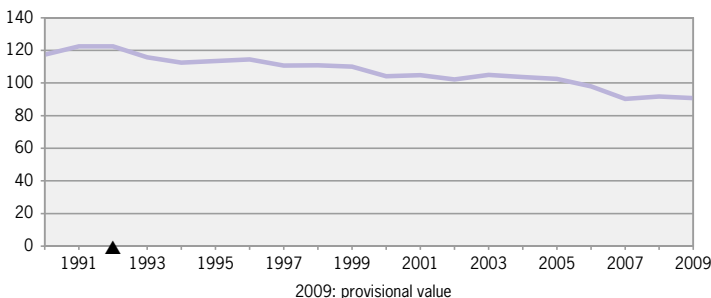
© FSO

CO₂ intensity is decreasing



CO₂ Intensity

CO₂ emissions in relation to gross domestic product at previous year's prices with reference year 2000, in grams per Swiss franc



Sources: Federal Statistical Office; Federal Office for the Environment

© FSO

Other indicators on the theme of energy and climate are available online:

Energy consumption per person is tending to decrease



Energy intensity is decreasing



CO₂ emissions remain at the same level



Natural resources

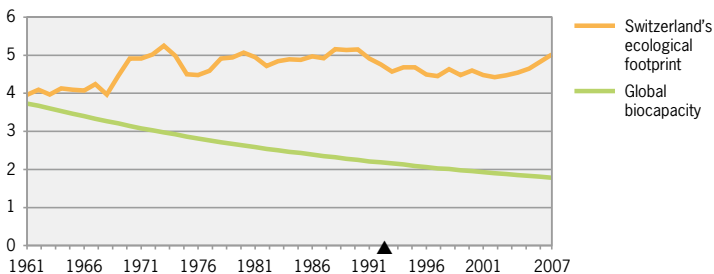
The natural foundations of life, biodiversity and the quality of ecosystems should be maintained in the long term. Fertile soils, good-quality water and clean air are vital for the well-being of present and future generations.

Switzerland's ecological footprint is growing; at the same time, the global biocapacity per person is decreasing

✘

Switzerland's ecological footprint in comparison to global biocapacity

In global hectares per person



Source: Global Footprint Network

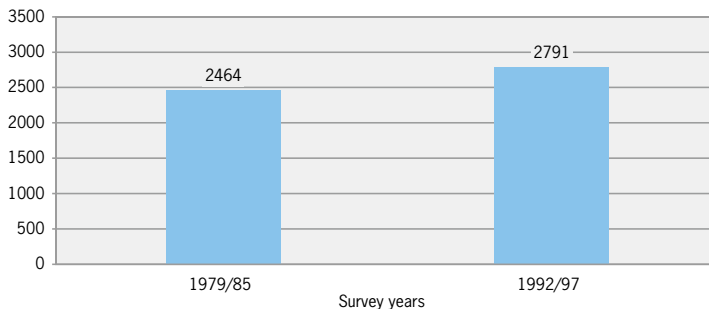
© FSO

The land used for settlement is increasing



Settlement area

Building areas, industrial and commercial areas, special urban areas, recreation facilities, parks and transportation areas, in square kilometres



Source: Federal Statistical Office

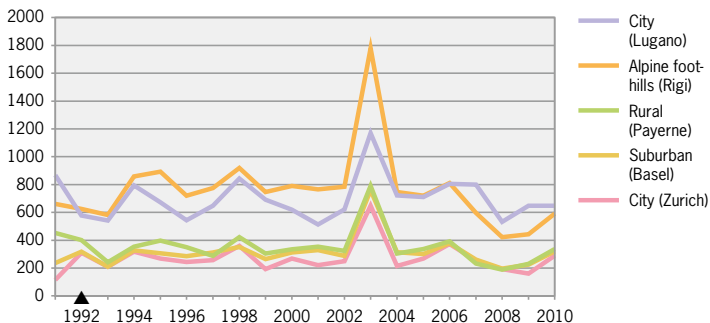
© FSO

The number of ozone exceedances is decreasing



Ozone cocentration

Number of exceedances (hourly averages)



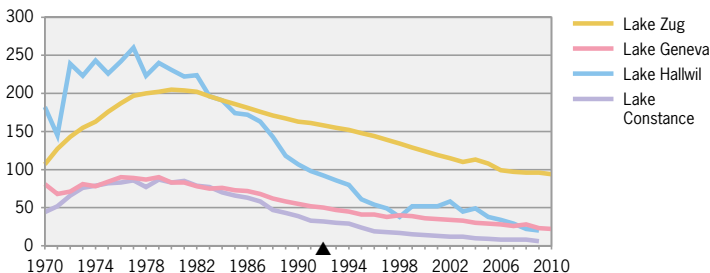
Source: Federal Office for the Environment

© FSO

The pollution of Swiss lakes by phosphorus is decreasing ✓

Phosphorus content in selected lakes

Total phosphorus (annual average values), in micrograms per litre



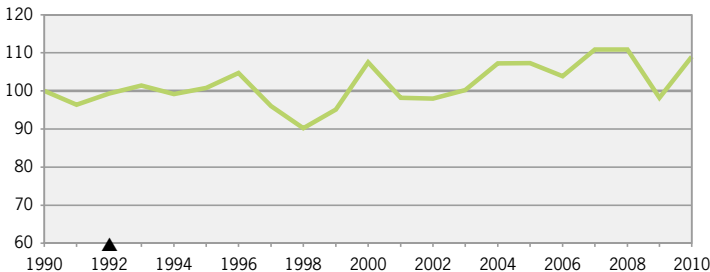
Source: Federal Office for the Environment

© FSO

The populations of bird species that regularly breed in Switzerland are increasing ✓

Populations of breeding birds

Trend of bird species that regularly breed in Switzerland (171 species), index 1990 = 100



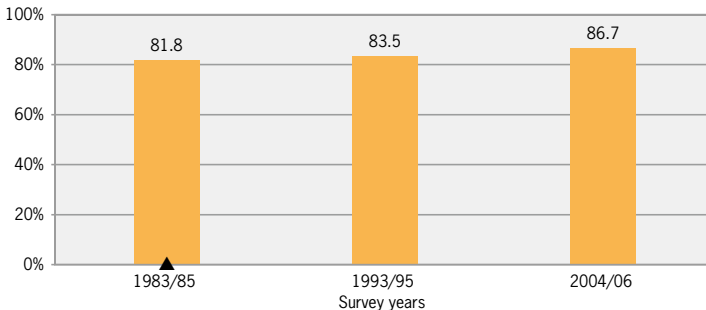
Source: Swiss Ornithological Institute Sempach

© FSO

The ecological quality of the forest is increasing ✓

Ecological quality of forests

Share of forest area with medium and high biotope value



Source: Swiss Federal Institute for Forest, Snow and Landscape Research

© FSO

Other indicators on the theme of natural resources are available online:

The **settlement area required per person** is increasing ✕

Landscape fragmentation remains at the same level ≈

The land area that can be used as farmland
(**arable land**) remains stable ≈

The **concentration of particulate matter** in the air is decreasing ✓

Nitrate content in groundwater

1 value

Switzerland's sustainable development at a glance

| | Indicator | Targeted development* | Observed development | Summary |
|---------------------------|---|-----------------------|----------------------|---------|
| Living conditions | Equivalent disposable income | ↗ | → | ≈ |
| | Housing costs | ↘ | ↗ | ✘ |
| | Life satisfaction | ↗ | → | ≈ |
| | Suicide rate | ↘ | ↘ | ✓ |
| | Violent offences | ↘ | ↗ | ✘ |
| Health | Life expectancy in good health | ↗ | ↗ | ✓ |
| | Mental wellbeing | ↗ | ↗ | ✓ |
| | Health-relevant behaviour: physical exercise | ↗ | ↗ | ✓ |
| | Overweight | ↘ | ↗ | ✘ |
| | Health expenditure | → | ↗ | ✘ |
| Social cohesion | Inequality of income distribution | ↘ | → | ≈ |
| | Voluntary work | ↗ | ↘ | ✘ |
| | Women in the National Council | ↗ | ↗ | ✓ |
| | Reading skills of 15-year-olds: difference by socio-economic background | ↘ | ↘ | ✓ |
| | Early school leavers: difference by citizenship | ↘ | ↘ | ✓ |
| International cooperation | Official development assistance | ↗ | ↗ | ✓ |
| | Official development assistance to LDC | ↗ | → | ≈ |
| | Attitude towards development assistance | ↗ | → | ≈ |
| | Multilateral treaties | ↗ | → | ≈ |
| | Duty-free imports from developing countries | ↗ | ↗ | ✓ |
| | Direct investments in developing countries | ↗ | ↗ | ✓ |
| | Remittances by migrants | ↗ | ↗ | ✓ |
| Education and culture | Reading skills of 15-year-olds | ↗ | ↗ | ✓ |
| | Early school leavers | ↘ | → | ✘ |
| | Participation in further education | ↗ | → | ≈ |
| | Regular use of a second national language | ↗ | → | ≈ |
| | Internet use: difference by income group | ↘ | ↗ | ✘ |
| | Participation in cultural activities | ↗ | 1 value | 1 value |
| | Own cultural activities | ↗ | 1 value | 1 value |
| Research and technology | Patent applications | ↗ | ↗ | ✓ |
| | Human resources in science and technology | ↗ | ↗ | ✓ |
| | Expenditure on research and development | ↗ | ↗ | ✓ |
| Work | Unemployment rate | ↘ | ↗ | ✘ |
| | Youth unemployment | ↘ | ↗ | ✘ |
| | Wage gap between men and women | ↘ | ↘ | ✓ |
| | Professional position: difference by gender | ↘ | ↘ | ✓ |

* Sustainable development principles and Sustainable Development Strategy 2012–2015

| | Indicator | Targeted development* | Observed development | Summary |
|----------------------------|---|-----------------------|----------------------|---------|
| Economic system | Investment to GDP ratio | ↗ | ↗ | ✓ |
| | Labour productivity | ↗ | ↗ | ✓ |
| | Level of public debt | ↘ | → | ≈ |
| | Fiscal revenue rate | ↘ | ↗ | ✗ |
| | Environment-related taxes | - | ↗ | - |
| Production and consumption | Total material requirement | ↘ | ↗ | ✗ |
| | Material intensity | ↘ | ↘ | ✓ |
| | Material requirement abroad for imports | ↘ | ↗ | ✗ |
| | Consumption of organic products | ↗ | ↗ | ✓ |
| | Fair trade | ↗ | → | ≈ |
| | Municipal waste | ↘ | ↗ | ✗ |
| | Waste recycling | ↗ | ↗ | ✓ |
| Mobility and transport | Final energy consumption of transport | ↘ | → | ≈ |
| | Share of public transport in total passenger transport | ↗ | ↗ | ✓ |
| | CO ₂ intensity of individual motorised transport | ↘ | ↘ | ✓ |
| | Share of rail freight transport in total freight transport | ↗ | ↘ | ✗ |
| | Intensity of freight transport | ↘ | ↗ | ✗ |
| | Take-offs and landings | ↘ | ↗ | ✗ |
| | Persons affected by noise | ↘ | ↗ | ✗ |
| Energy and climate | Final energy consumption (per capita) | ↘ | ↘ | ✓ |
| | Energy intensity | ↘ | ↘ | ✓ |
| | Energy dependency | ↘ | ↗ | ✗ |
| | Renewable energies | ↗ | ↗ | ✓ |
| | Greenhouse gas emissions | ↘ | → | ≈ |
| | CO ₂ emissions | ↘ | → | ≈ |
| | CO ₂ intensity | ↘ | ↘ | ✓ |
| Natural resources | Ecological footprint | ↘ | ↗ | ✗ |
| | Settlement area | → | ↗ | ✗ |
| | Per-capita settlement area | → | ↗ | ✗ |
| | Landscape fragmentation | ↘ | → | ≈ |
| | Arable land | ↗ | → | ≈ |
| | Particulate matter concentration | ↘ | ↘ | ✓ |
| | Ozone concentration | ↘ | ↘ | ✓ |
| | Nitrate content in groundwater | ↘ | 1 value | 1 value |
| | Phosphorus content in lakes | ↘ | ↘ | ✓ |
| | Breeding bird populations | ↗ | ↗ | ✓ |
| | Ecological quality of forests | ↗ | ↗ | ✓ |

Additional information

More information about **MONET** available at www.monet.admin.ch:

- ▶ All **indicators** are presented in detail with their significance for sustainable development and further information.
- ▶ **16 key indicators** that illustrate sustainable development in a compact and easily comprehensible way.
- ▶ **45 sustainable development principles** that indicate the direction sustainable development should take.
- ▶ The **Dashboard of Sustainable Development** with 55 indicators from the MONET system of indicators. The Dashboard measures progress made in the Federal Council's Strategy for Sustainable Development 2012–2015 by means of an internet tool which allows the transparent aggregation of information.
- ▶ Information about **KLARTEXT**, a card game with exciting information about Switzerland based on the MONET indicators.

Extensive information about sustainable development policy in Switzerland available at www.are.admin.ch/sustainabledevelopment

The Pocket Statistics 2012 brochure is a joint publication of the Federal Statistical Office (FSO), the Federal Office for Spatial Development (ARE), the Federal Office for the Environment (FOEN) and the Swiss Agency for Development and Cooperation (SDC).

www.statistics.admin.ch

www.are.admin.ch

www.sdc.admin.ch

www.environment-switzerland.ch

Imprint

Publisher: Federal Statistical Office (FSO)

Concept, editor: Jana Wachtl

Graphics/Layout: DIAM Section, Prepress / Print, FSO

Translations: FSO Language Service, available as a PDF file or in a printed version in German, French, Italian and English

Cover page graphics: FSO; design: Netthoevel & Gaberthüel, Biel; Photo: © Anetta – Fotolia.com

Information: Federal Statistical Office, Environment, Sustainable Development, Territory, Jana Wachtl, tel.: 032 713 67 45, e-mail: monet@bfs.admin.ch

Orders: Order number 737-1200 (free of charge), tel.: 032 713 60 60, e-mail: order@bfs.admin.ch, fax: 032 713 60 61

